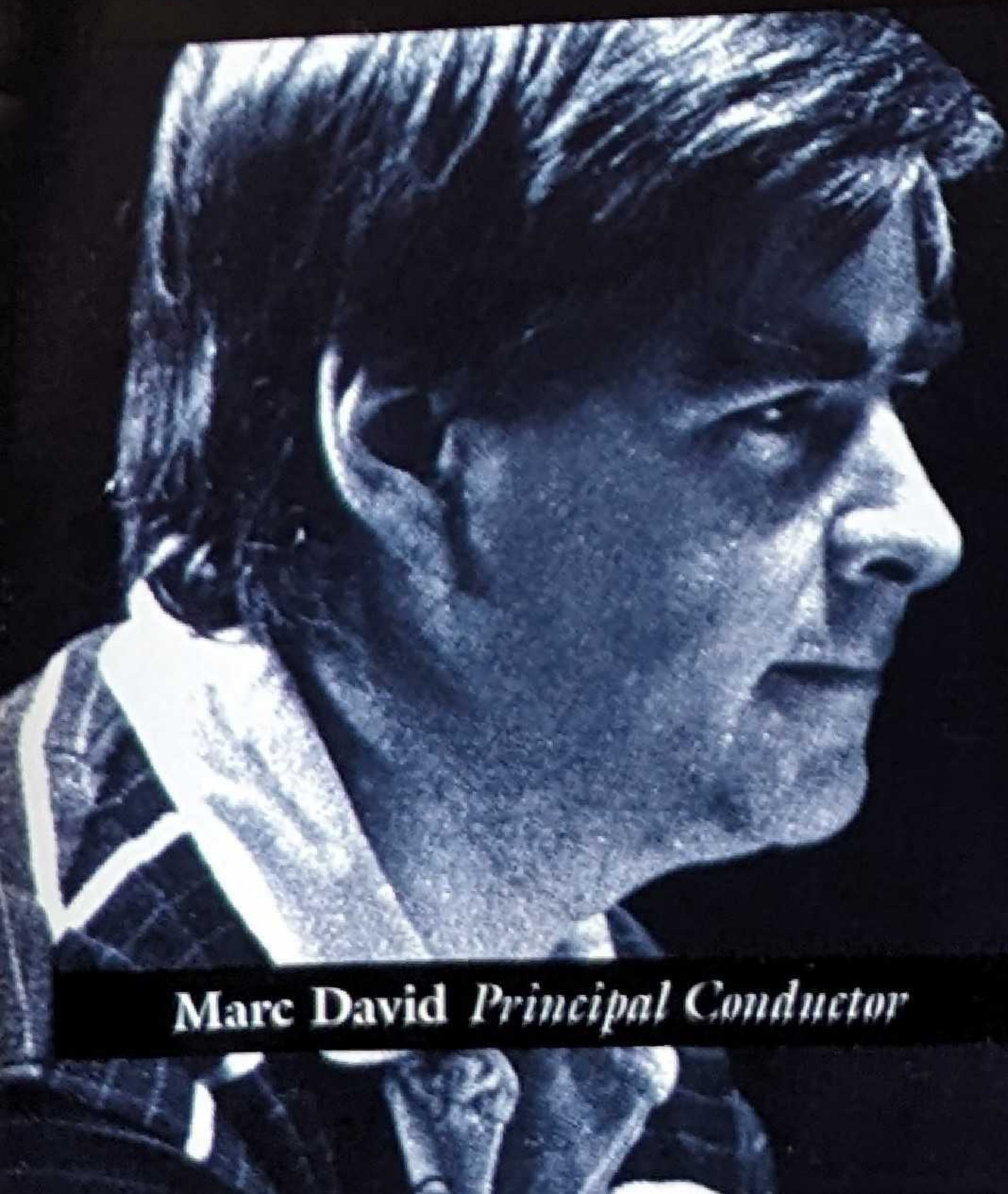


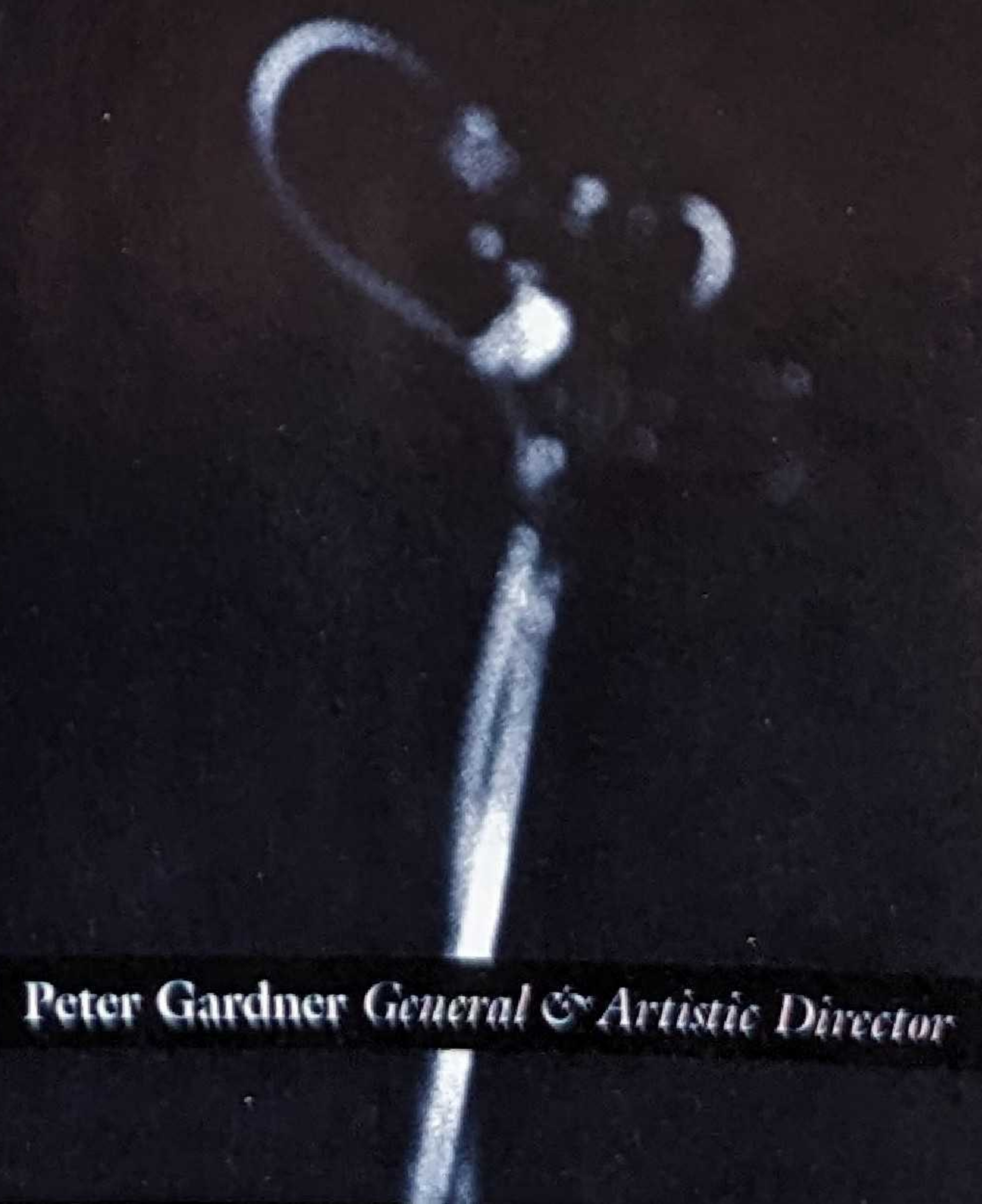
OUR 2000-2001 SEASON



COME BACK FOR MORE!

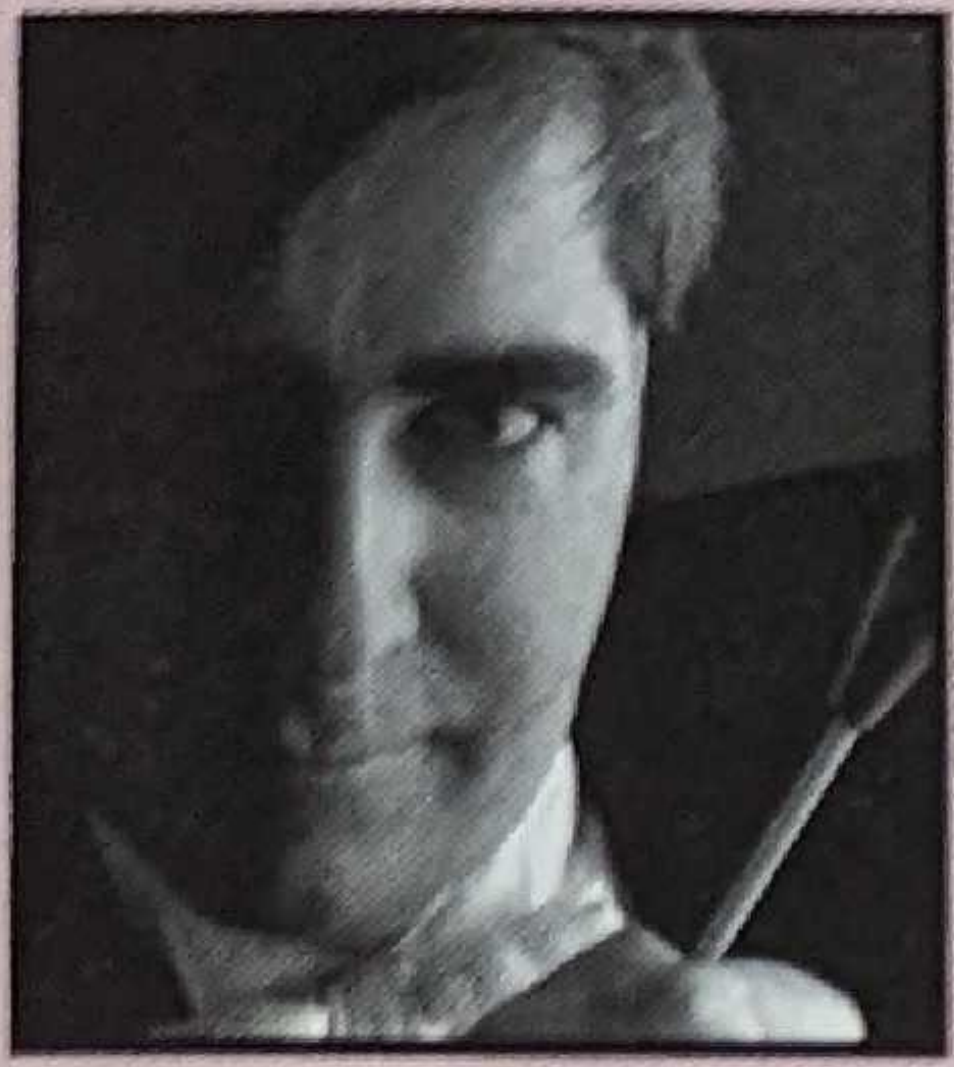


Marc David *Principal Conductor*



Peter Gardner *General & Artistic Director*

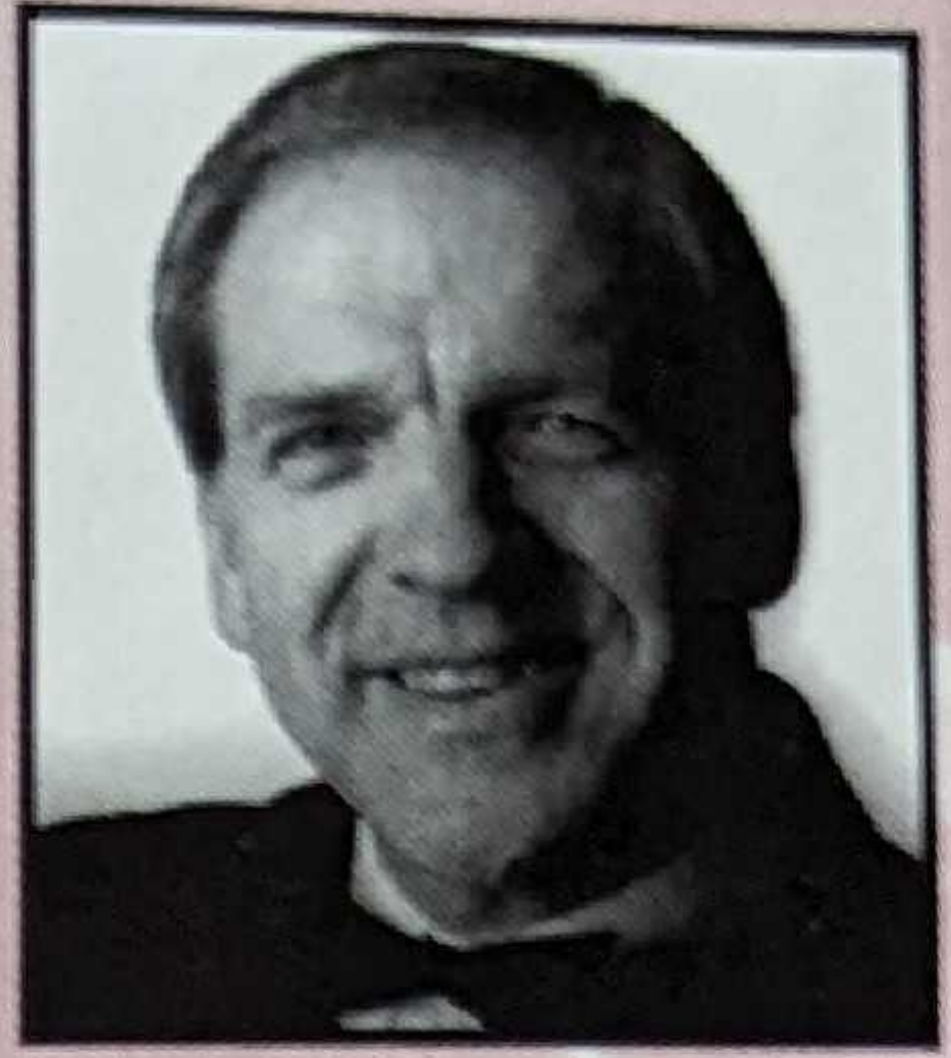
# THIS SEASON'S ARTISTS



Marc David  
*Principal Conductor*



Atlantic String Quartet (clockwise from top): Alison Black Violin,  
Alexandra Bates Viola, Jennifer Johnson Violin, Theo Weber Cello



Jim Duff  
*Conductor*



Douglas Dunsmore  
*Conductor*



Peter Gardner  
*Artistic Director*



Martin Beaver  
*Violin*



Catherine Cornick  
*Soprano*



Neil Edwards  
*Baritone*



Sandra Graham  
*Mezzo Soprano*



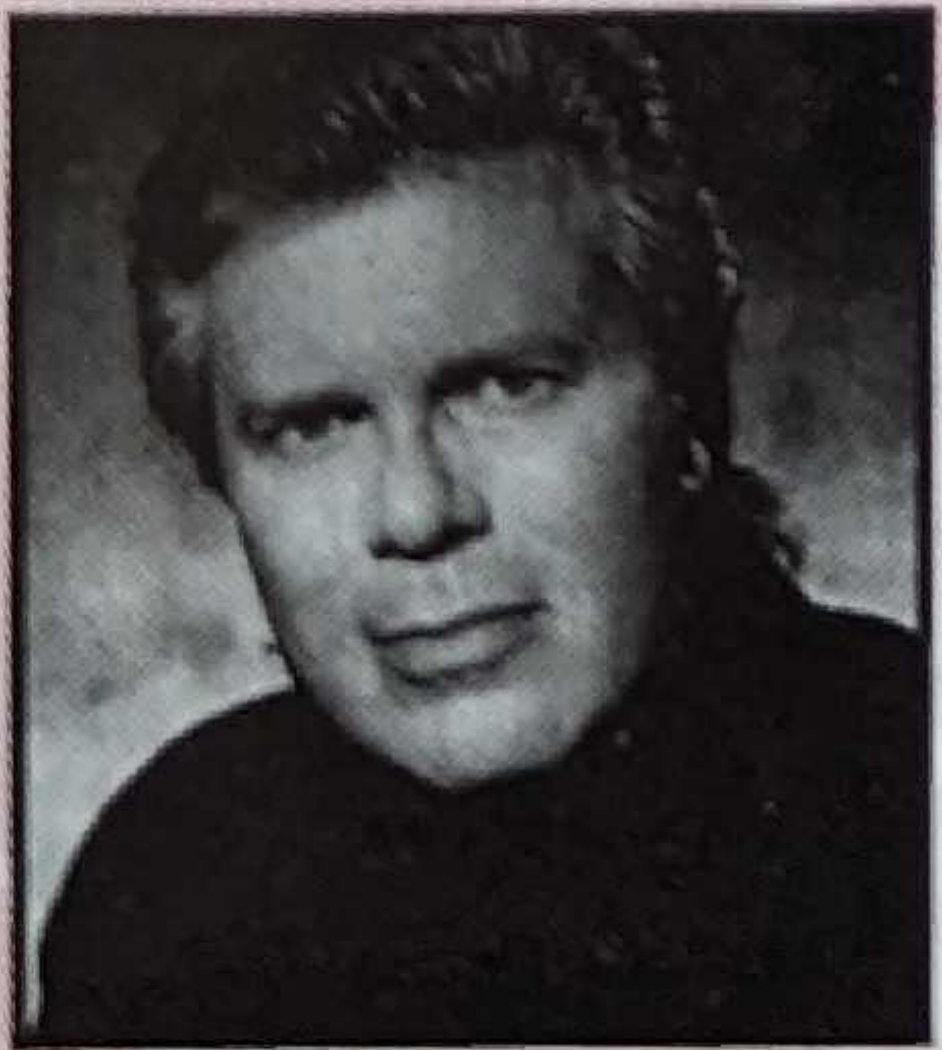
Mike Herriott  
*Trumpet*



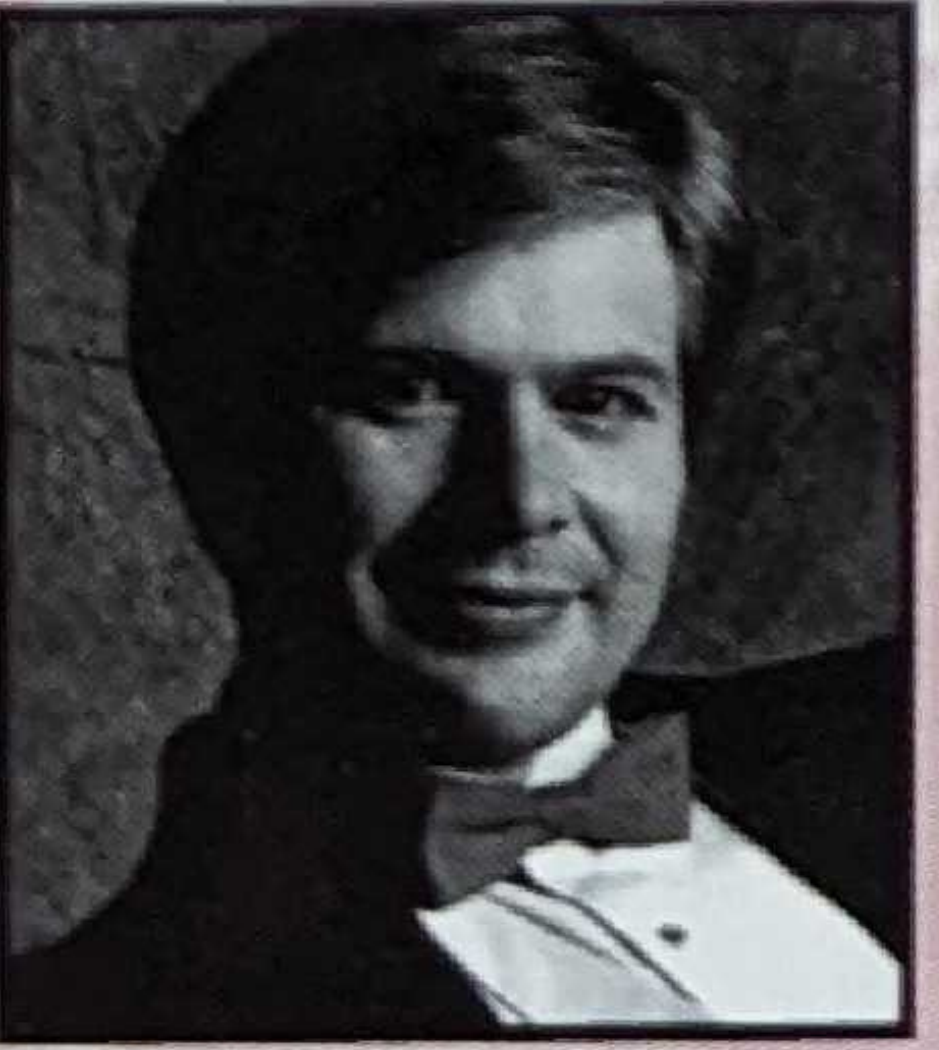
Joanne Kolomyjec  
*Soprano*



Pamela MacDonald  
*Mezzo Soprano*



David Malis  
*Baritone*



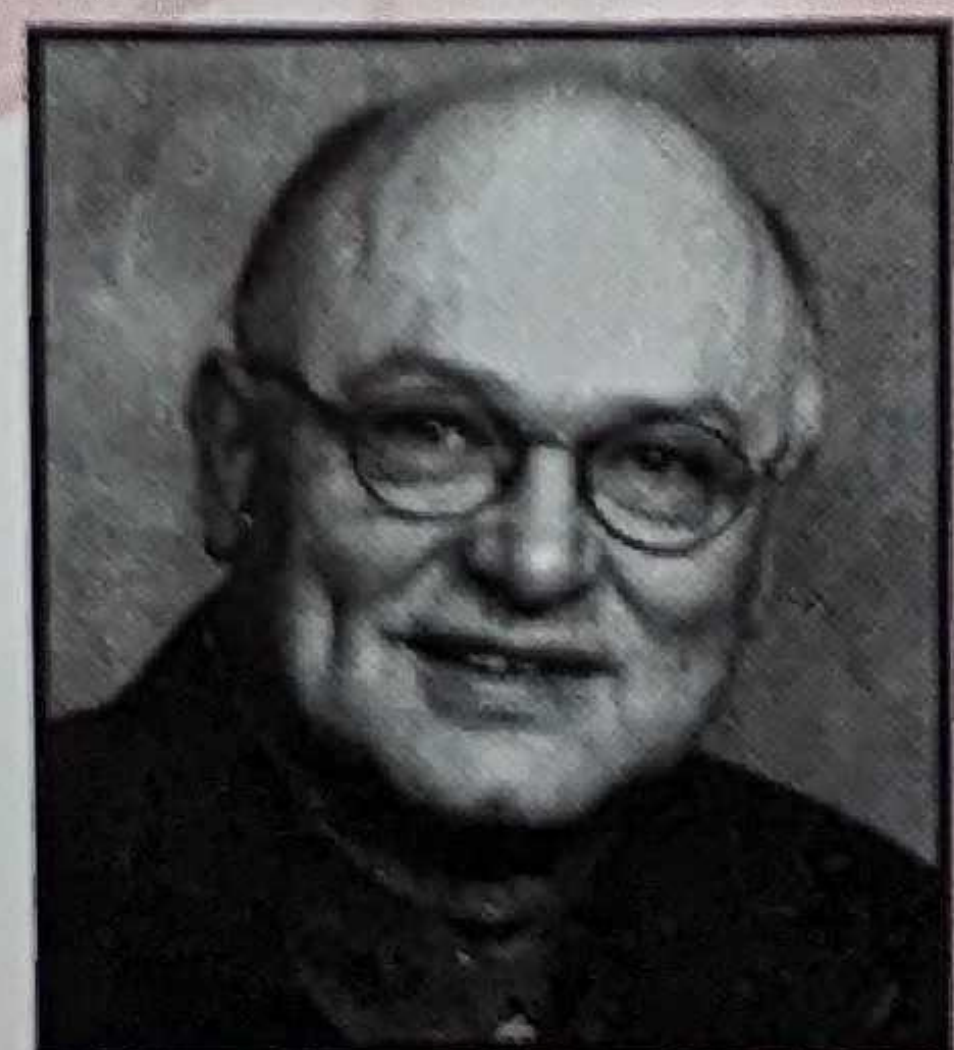
Kevin McMillan  
*Baritone*



Shelley Neville  
*Soprano*



David Pomeroy  
*Tenor*



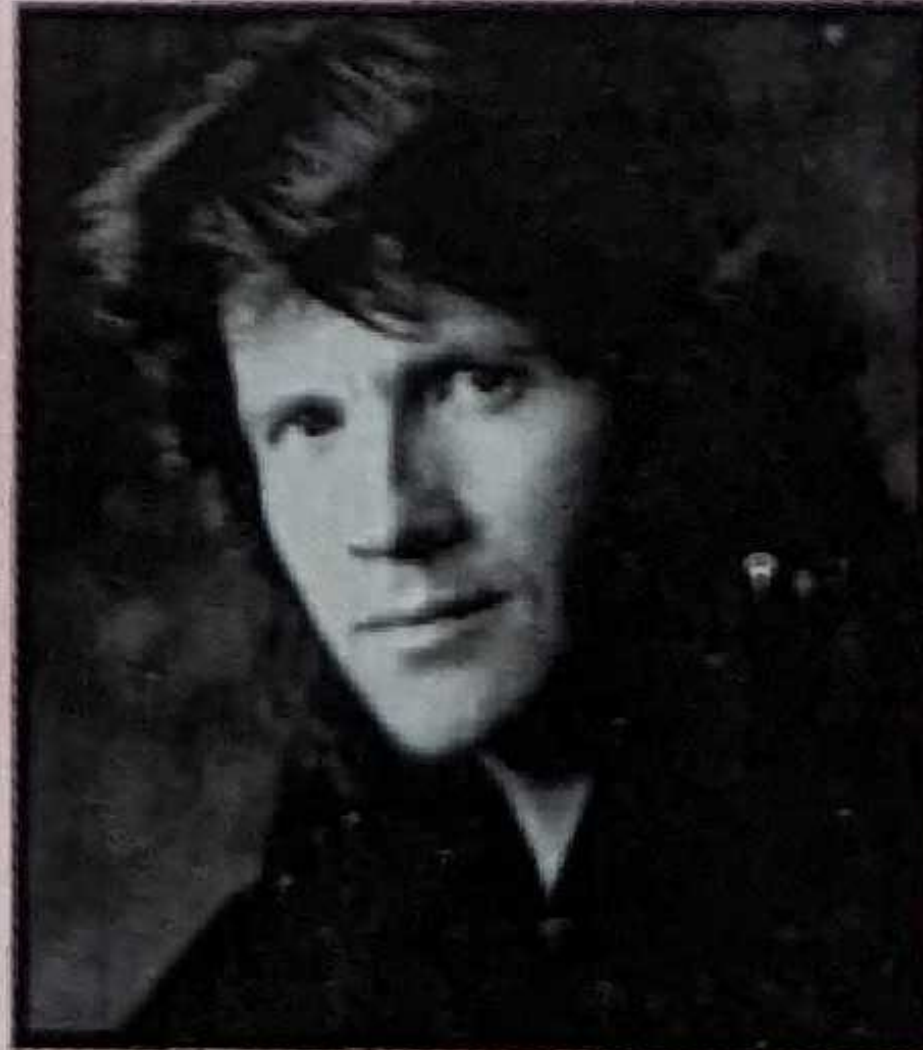
Brian Roberts  
*Tenor*



Caroline Schiller  
*Soprano*



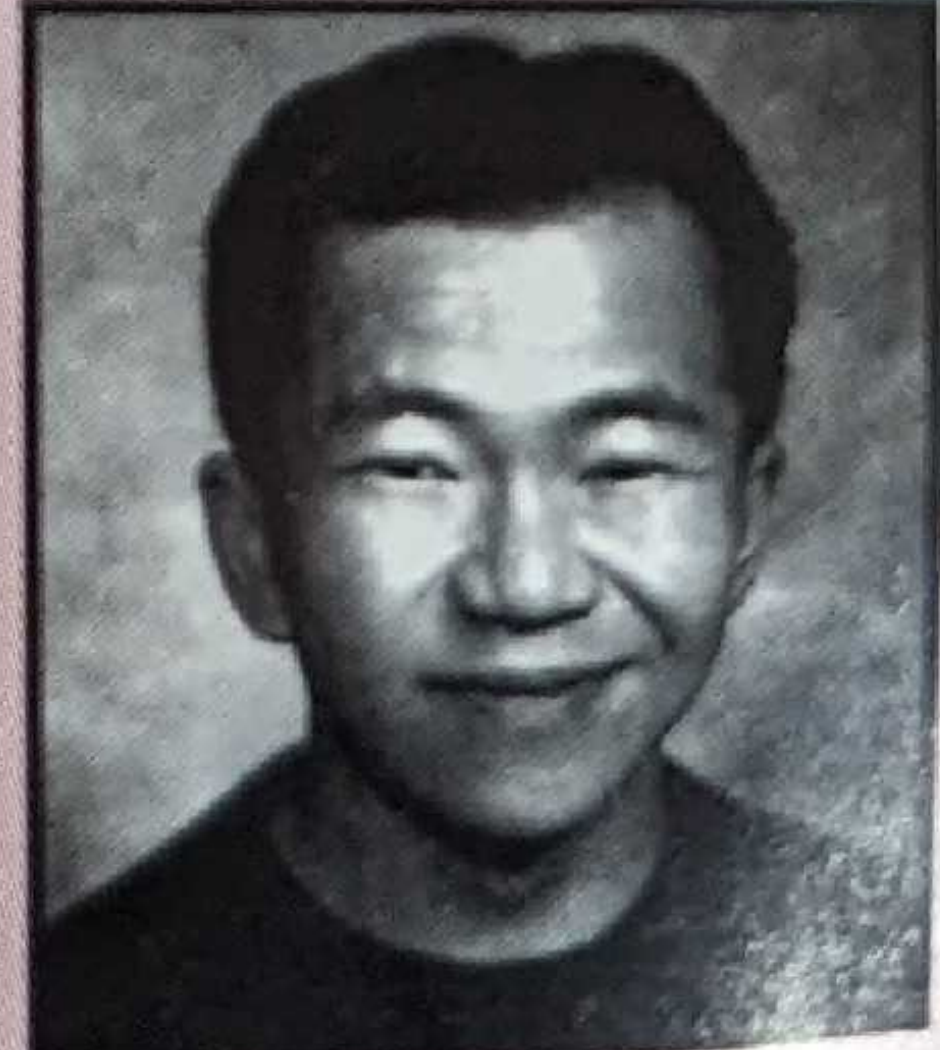
Berni Stapleton  
*Actor*



Timothy Steeves  
*Piano, Harpsichord*



Theo Weber  
*Cello*



Thomas Yee  
*Piano*

# SUBSCRIBE NOW!

⌘ Save up to 20% off single ticket prices ⌘

⌘ No box office line ups ⌘

⌘ Special discount opportunities throughout the season ⌘

⌘ If you cannot attend a performance you may return your ticket(s) up to 24 hours in advance and receive a tax receipt equal to the face value ⌘

The NSO offers the following ticket packages:

PACKAGE/SERIES	INCLUDES	DISCOUNT	ORDER BEFORE
Masterworks Series	4 concerts	10%	September 29
Sinfonia Series	4 concerts	10%	September 13
Recital Series	4 concerts	10%	October 13
Season Sampler	Masterworks 1, 2, 3 or 4 Sinfonia 1, 2, 3 or 4 & Messiah	10%	September 13
Gold Package	4 Masterworks 4 Sinfonia	15%	September 13
Connoisseur Package	4 Masterworks 4 Sinfonia, 4 Recital Messiah & Big Band	20%	September 13

To order any package, please refer to our order form in the centerfold of this brochure.



**NSO**  
NEWFOUNDLAND SYMPHONY ORCHESTRA

**Marc David**  
*Principal Conductor*

**Peter Gardner**  
*General & Artistic Director*

# MASTERWORKS SERIES

Marc David *Conductor*

## TCHAIK IT OUT

FRIDAY OCTOBER 13, 2000

Arts & Culture Centre ~ 8pm

**Martin Beaver** *Violin*

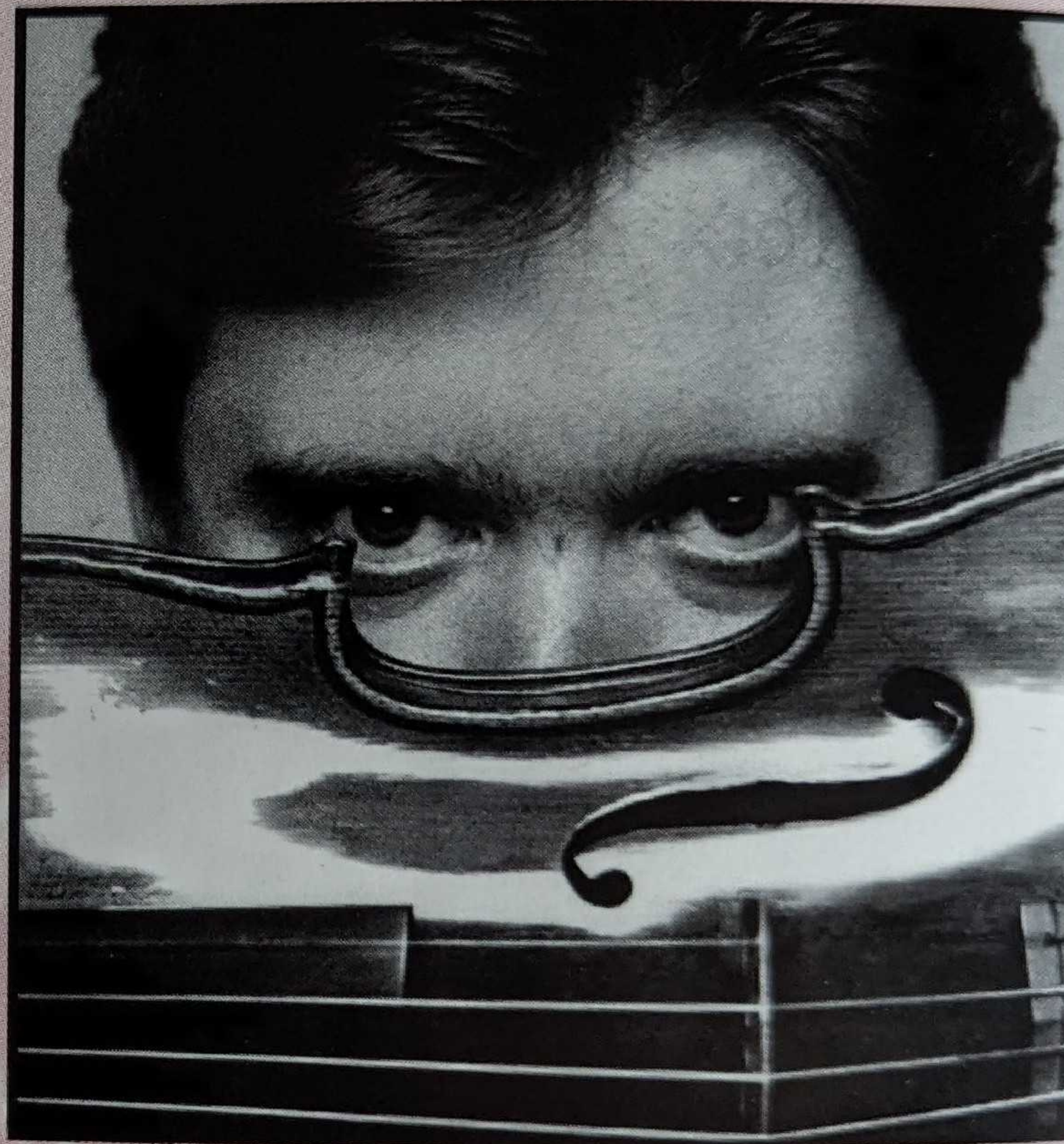
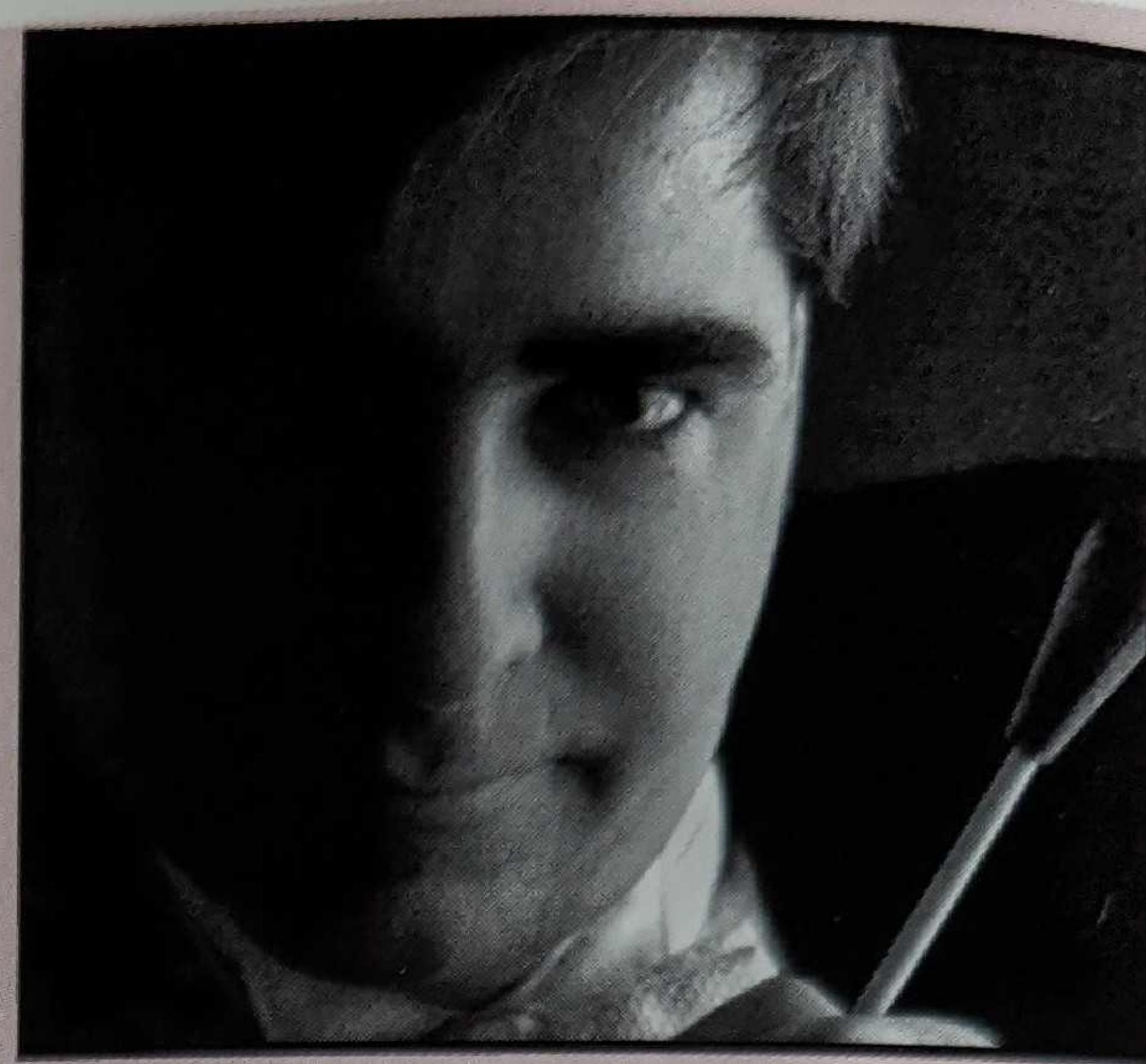
Overture Burlesque  
Violin Concerto in D  
Symphony No. 4

George Fiala  
Tchaikovsky  
Tchaikovsky

7:15pm Prelude Concert: **Gayle Tapper** *Venezuelan Harp*

Opening night of our Masterworks Series features one of the best loved virtuosic violin concertos. Settle in for an evening of joy, sadness, nostalgia and brilliance with a Russian Flare. Played by Canada's own international competition winner, Martin Beaver.

a **Seagram** Symphonia program



## THE MASTERSINGER

FRIDAY NOVEMBER 17, 2000

Arts & Culture Centre ~ 8pm

**Joanne Kolomyjec** *Soprano*

Die Meistersinger Overture  
Cantiones Mysticae  
Symphony No. 4

Wagner  
Godfrey Ridout  
Mahler

7:15pm Prelude Concert: *Atlantic String Quartet*

Be enchanted by the charming, exuberant melodies of the Mahler and the Big Sound of the Wagner. Joanne Kolomyjec is our "meistersinger". She is a winner of the Metropolitan Opera national auditions and has recorded the Ridout songs.



HOTEL NEWFOUNDLAND  
CANADIAN PACIFIC  
HOTELS

THE PEOPLE'S PAPER  
**The Telegram**

# PICTURES AT AN EXHIBITION

FRIDAY FEBRUARY 16, 2001

Arts & Culture Centre ~ 8pm

**Thomas Yee** *Piano*

**Newfoundland Symphony Youth Orchestra**

*Les Préludes symphonic poem*

*Concerto de Québec*

*Pictures at an Exhibition*

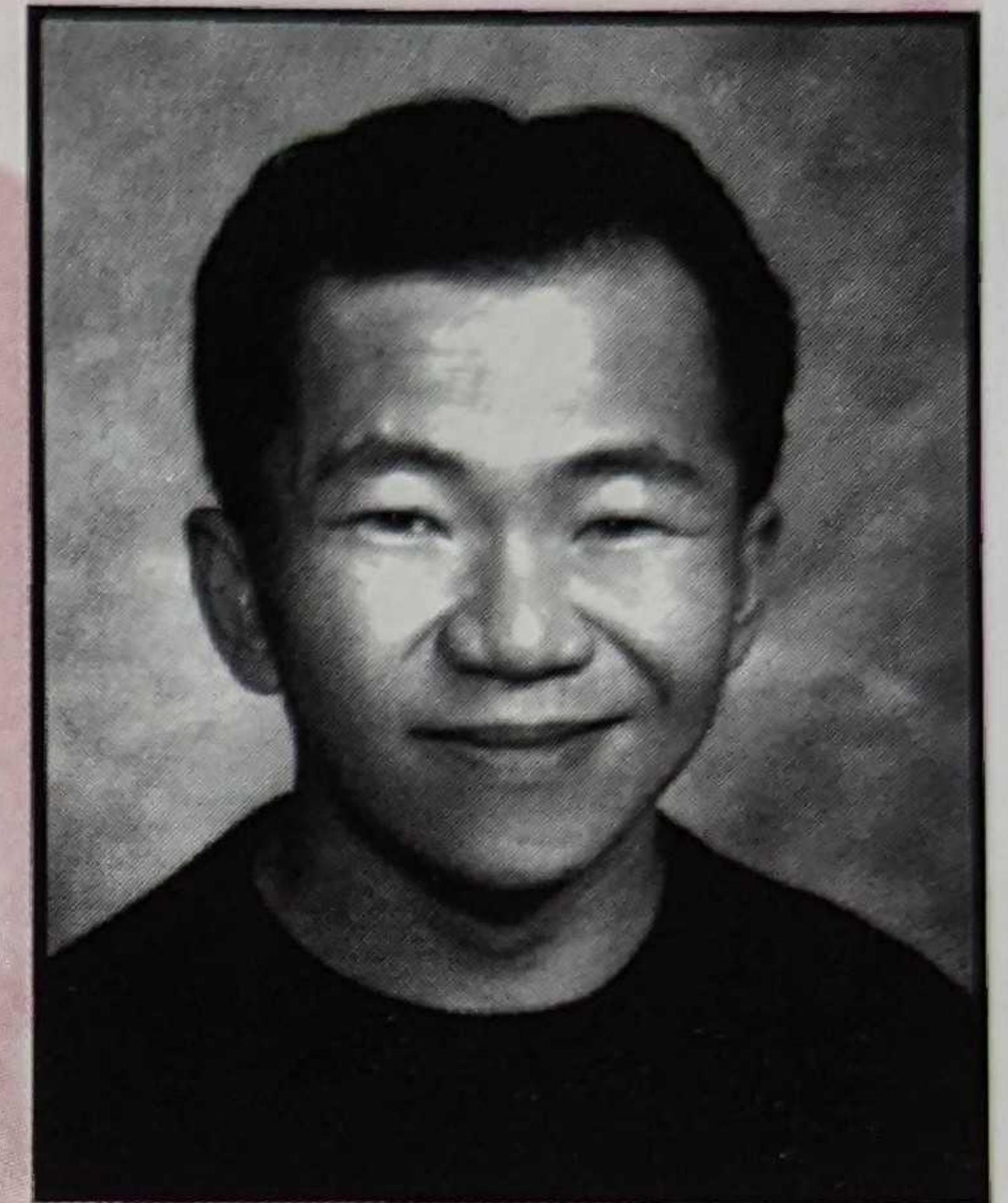
Liszt

André Mathieu

Moussorgsky/Ravel

7:15pm Prelude Concert: **Scrunchions Percussion Ensemble**

Ravel's masterful orchestration of "Pictures" transformed these originally for solo piano pieces into an orchestral showpiece. Moussorgsky chose 10 drawings from an art exhibit for portrayal in sound. To these he added a "promenade" showing himself strolling from picture to picture. Thomas Yee, now doing doctoral work at the Eastman School, joins us for the Mathieu.



# AND THERE WAS LIGHT

FRIDAY & SATURDAY MARCH 30 & 31, 2001

Basilica of St. John the Baptist ~ 8pm

**Shelley Neville** *Soprano*

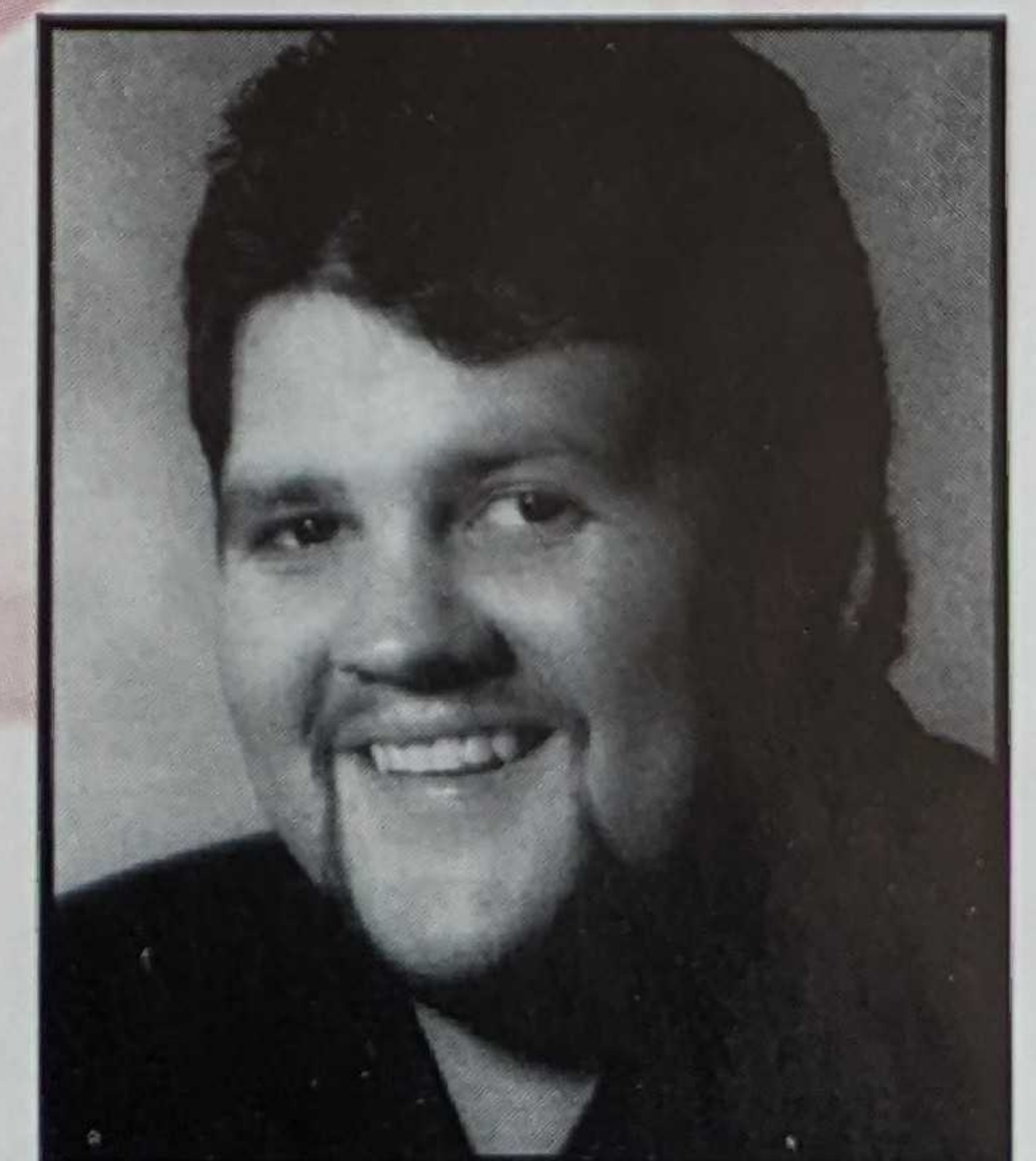
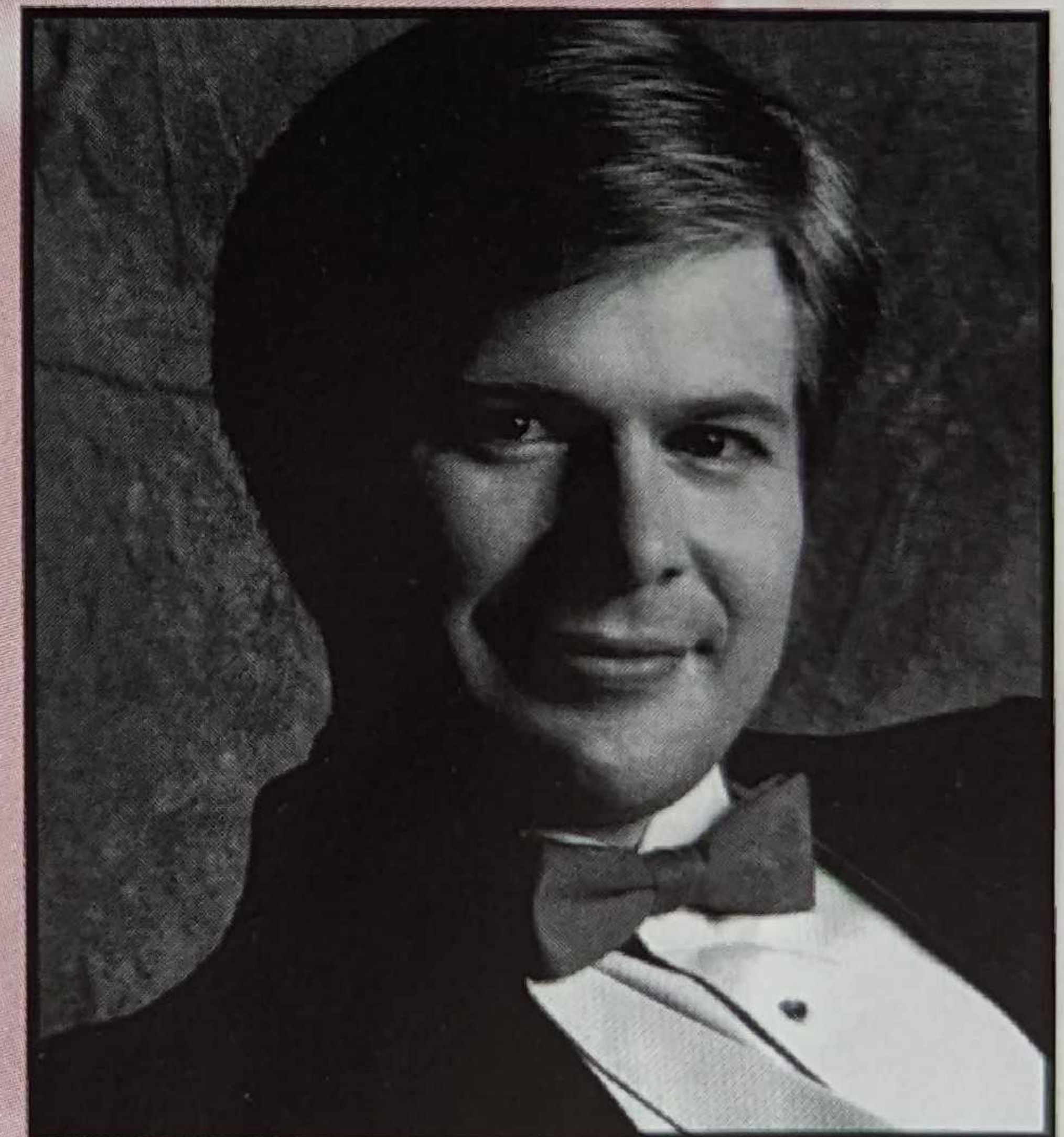
**David Pomeroy** *Tenor*

**Kevin McMillan** *Baritone*

**NSO Philharmonic Choir**

Franz Joseph Haydn's **CREATION**

Capturing the spirit of Handel's oratorio, *Messiah*, Franz Joseph Haydn's *Creation* is based on texts from Genesis and Milton's *Paradise Lost*. Sung in English by an all-star ensemble, it's a brilliant blend of arias and choruses.



PATTERSON PALMER HUNT MURPHY  
BUSINESS PARTNERS IN ATLANTIC CANADA

*Law*

Single tickets: \$26.50/\$22.50, \$21.50/\$18.00, \$16.00/\$13.00 - No. 1, 2 and 3 Call 729-3900 No. 4 Call 753-6492



**PETRO-CANADA**

Canada's Gas Station  
presents

# SINFONIA SERIES

## THE VISITOR

SATURDAY SEPTEMBER 23, 2000

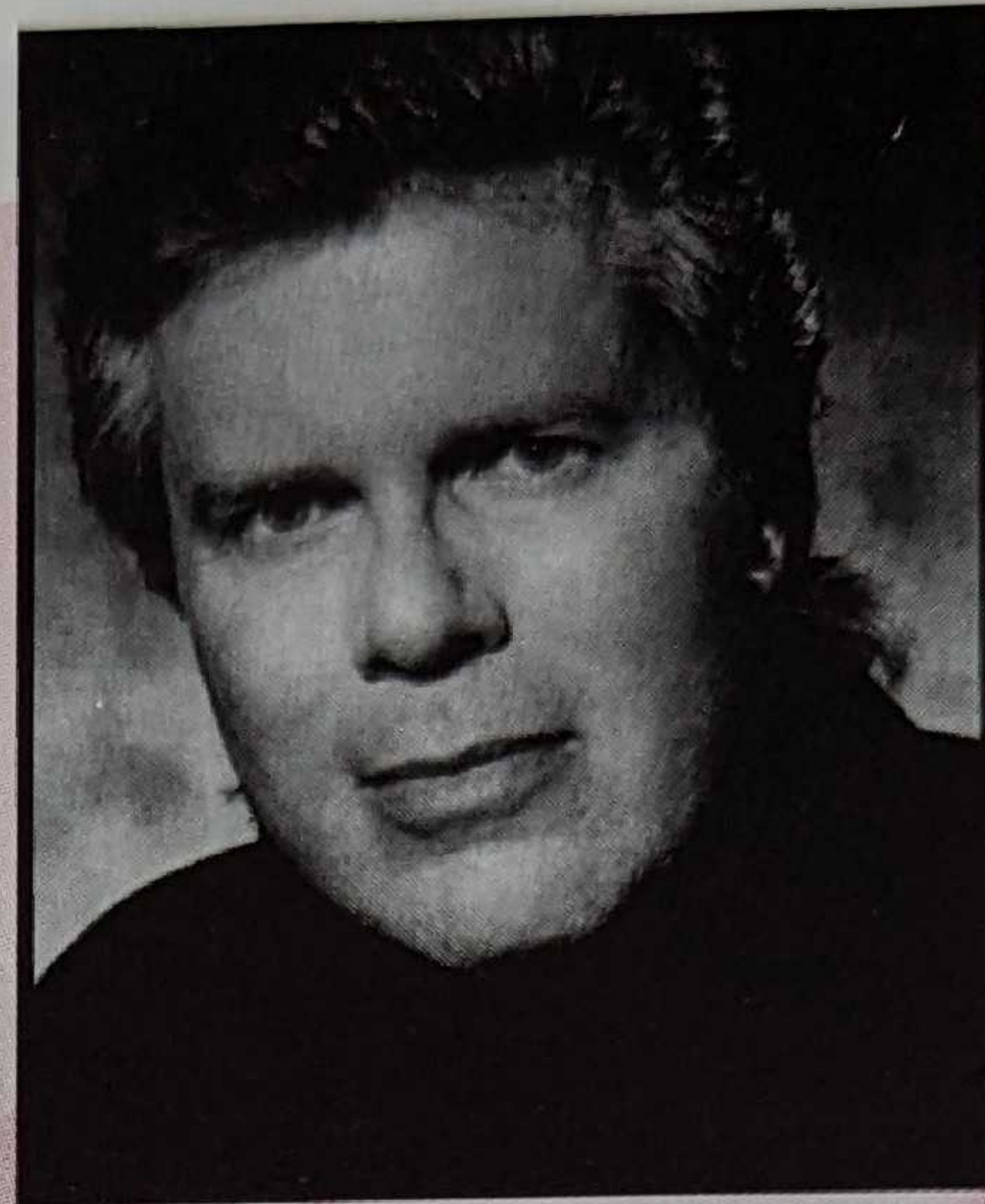
Arts & Culture Centre ~ 8pm

**Marc David** *Conductor*

**David Malis** *Baritone*

**Sandra Graham** *Mezzo soprano*

**Berni Stapleton** *Actor*



A world premier, concert performance, of a new one act chamber opera written by Newfoundland Composer Michael Parker with libretto by award winning writer John Steffler.

Together since childhood Harki and his wife, Mekja, are preparing to leave L'Anse aux Meadows with their Viking masters. Harki wishes to return to Viking society and possible freedom. For Mekja only greater distance from the Viking will suffice. In the twentieth century a parallel conflict for Agnes, a modern doctor and Decker an archaeologist on the newly discovered Viking site unfolds.

David Malis, who has appeared with the Metropolitan Opera, Covent Garden and La Scala, sings the role of *Harki*. Sandra Graham, who has appeared with the Montreal Symphony, Cleveland Orchestra and Stuttgart State Opera, sings the role of *Mekja*. Well known actor and Newfoundland's own, Berni Stapleton, plays *Agnes*.



## MUSIC AND SPIRIT

SATURDAY JANUARY 13, 2001

Cook Recital Hall ~ 8pm

**Peter Gardner** *Conductor*

**Theo Weber** *NSO Principal Cello*

**MUN Chamber Choir**

**MUN Chamber Orchestra**

Miserere

The Protecting Veil

Dreams of Sidhe

Introduction and Allegro for Strings

Gregorio Allegri

John Tavener

Patrick Cardy

Edward Elgar

Relax after the holidays with an evening of ethereal music: As a child, Mozart heard the famous Miserere once and wrote it out from memory! And Tavener's 1989 premiere of The Protecting Veil for solo cello received rapturous applause. His music was also sung at Princess Diana's funeral.



# HANDEL'S MESSIAH

FRIDAY & SATURDAY DECEMBER 8 & 9, 2000

Basilica of St. John the Baptist ~ 8pm

Douglas Dunsmore *Conductor*

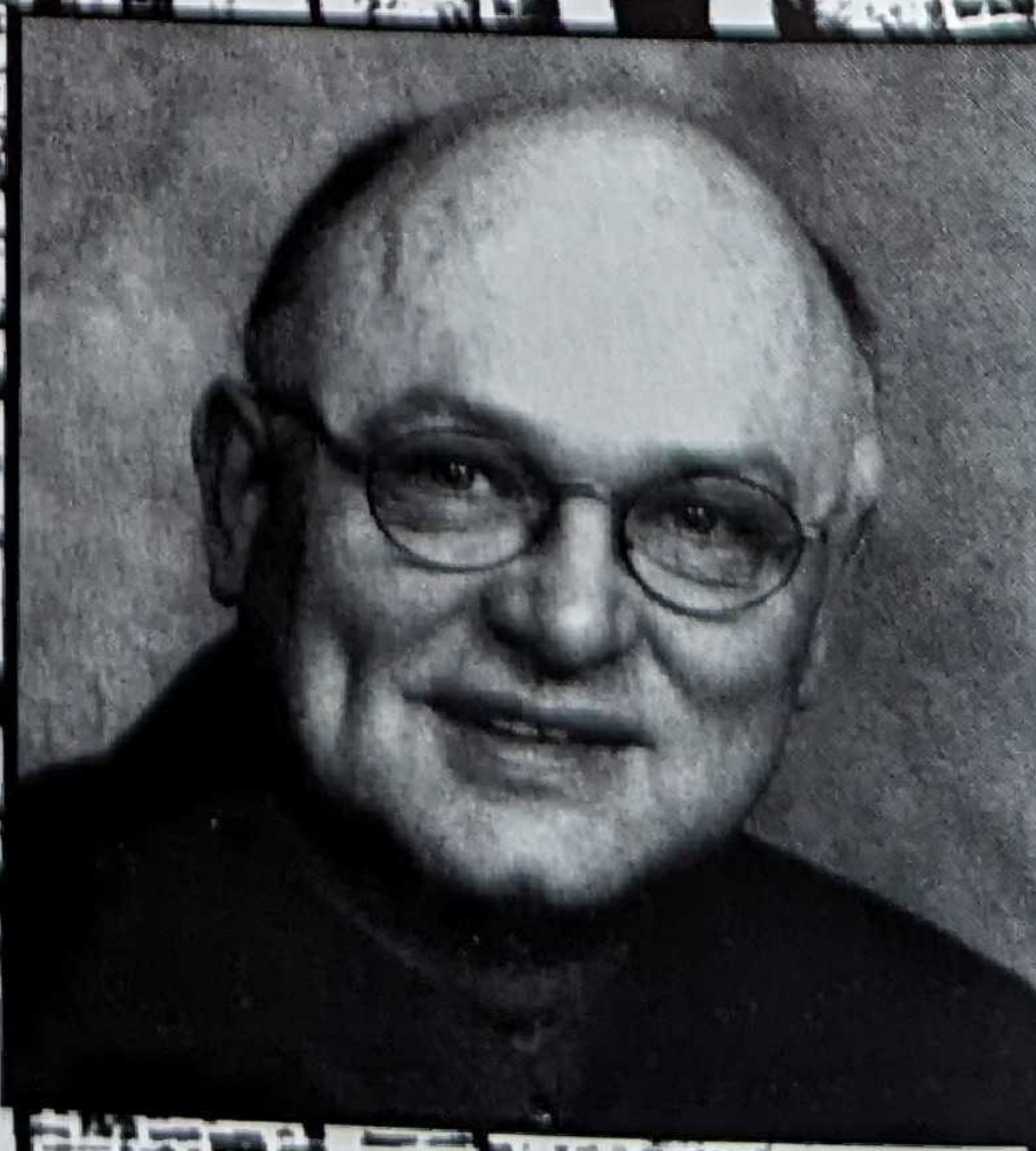
Catherine Cornick *Soprano*

Pamela MacDonald *Mezzo Soprano*

Brian Roberts *Tenor*

Neil Edwards *Baritone*

NSO Philharmonic Choir



Single tickets: \$22.00/\$18.50, \$16.00/\$13.00, \$11.50/\$9.50 Call 753-6492

# RECITAL SERIES

## Atlantic String Quartet



Clockwise from top: **Alison Black** Violin, **Alexandra Bates** Viola, **Jennifer Johnson** Violin, **Theo Weber** Cello  
Photograph by Ned Pratt

### RECITAL NO. 1

FRIDAY OCTOBER 20, 2000 Cook Recital Hall ~ 8pm

String Quartet, F major "American"	Antonin Dvorak
String Quartet, Op. 11	Samuel Barber
Piano Quartet, g minor Op. 51 No. 1	Johannes Brahms

Guest artist: **Kristina Szutor** piano

### RECITAL NO. 2

FRIDAY DECEMBER 1, 2000 Cook Recital Hall ~ 8pm

String Quartet Op. 18 No. 1, F Major	Beethoven
String Quartet No. 3	Cha Ka Nin
String Quartet	Maurice Ravel

### RECITAL NO. 3

FRIDAY FEBRUARY 9, 2001 Cook Recital Hall ~ 8pm

String Quartet G Major, K387	Mozart
String Quartet D Major, Op. 33 No. 1	Haydn
Septet Op. 20, E flat Major	Beethoven

Guest artists: **Lorne Buick** Clarinet  
**Grant Etchegary** Bassoon, **Douglas Vaughan** Horn

### RECITAL NO. 4

FRIDAY APRIL 6, 2001 Cook Recital Hall ~ 8pm

String Quartet Op. 95, f minor	Beethoven
String Quartet	Zoltan Kodaly
String Quartet No. 3	Bela Bartok

Single tickets: \$16.00/\$14.00 Call 753-6492



# SHOUT!

## WITH THE ED GOFF BIG BAND

FRIDAY & SATURDAY JANUARY 26 & 27, 2001

Arts & Culture Centre ~ 8pm

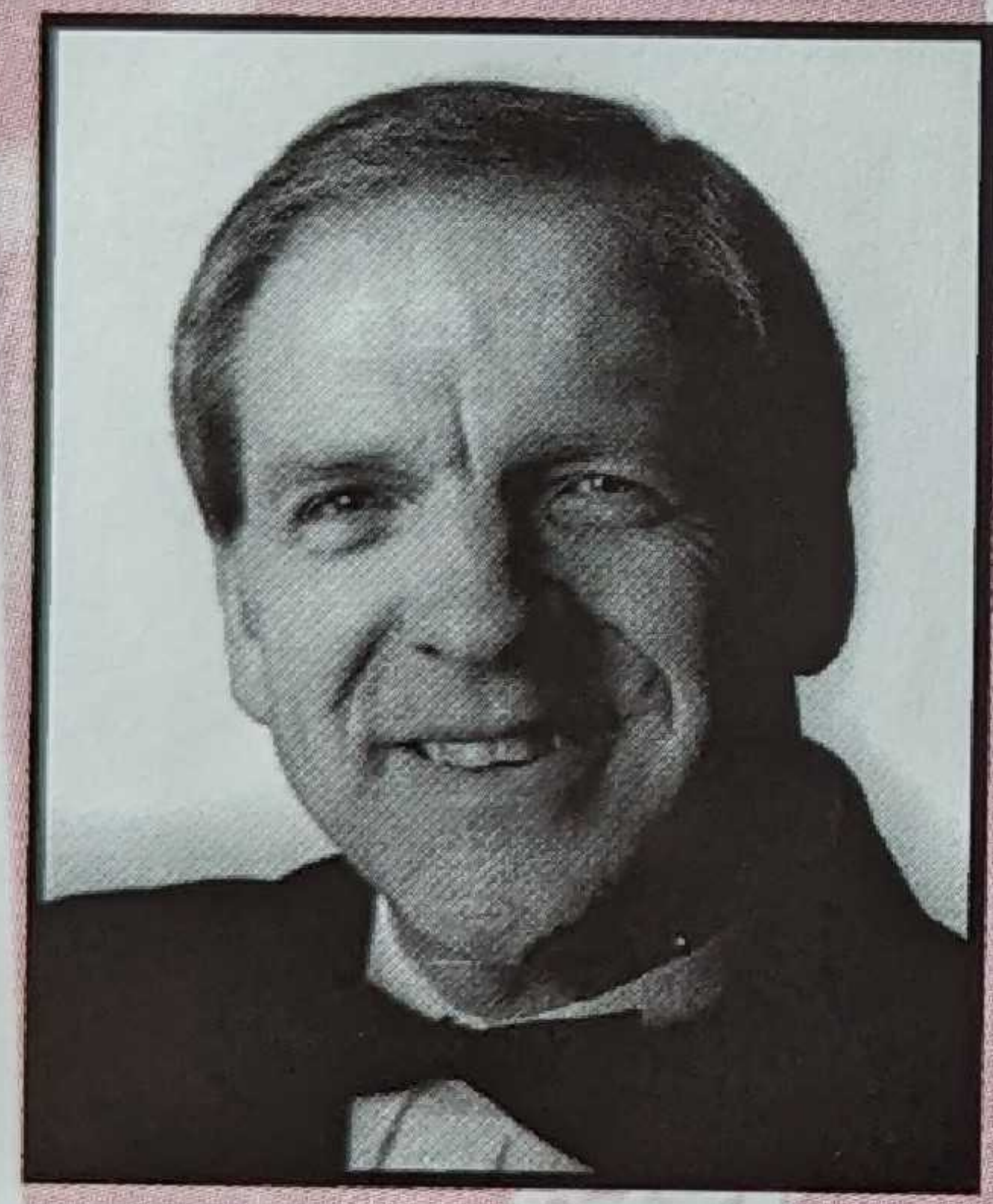
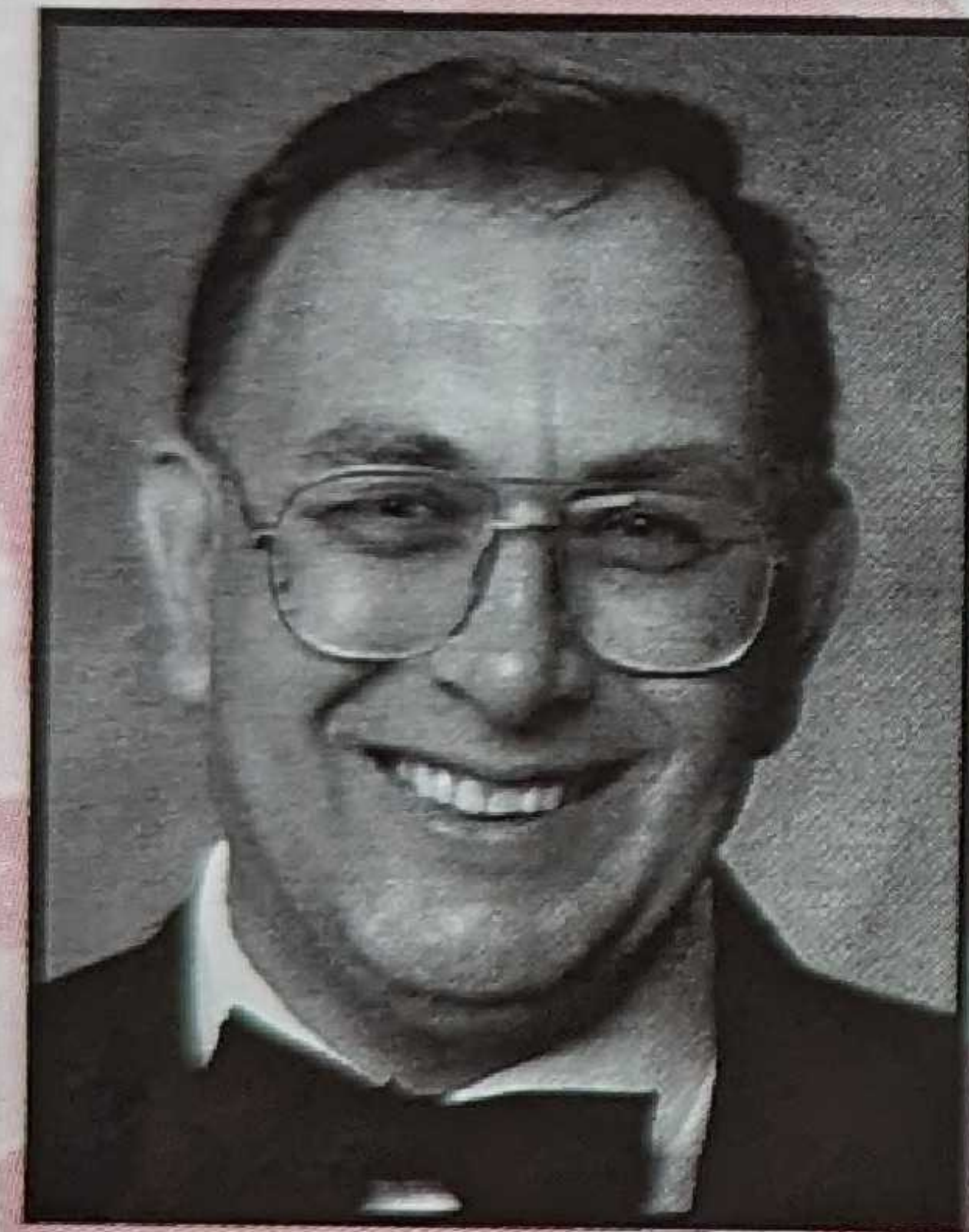
Peter Gardner & Jim Duff Conductors

Newfoundland Symphony Orchestra

Ed Goff Big Band

Mike Herriott Trumpet

The music of the The Beatles - *Yesterday, Michelle, Penny Lane, Norwegian Wood, All My Lovin', Fool on the Hill* and much more! Plus lots of Jazz tunes like *Body & Soul, So What, and Flight of the Bumble Bee.*



Single tickets: \$29.50/\$25.50, \$25.50/\$21.00, \$18.00/\$14.00 Call 729-3900

# THE BIG TICKET

The NSO's 10th Annual fundraising Gala and Gallery of Newfoundland's Best.

Single tickets: \$100

Call 722-4441







Arts & Culture Centre  
3rd floor  
P.O. Box 1854  
St. John's, NF A1C 5P9  
tel: 753-6492  
fax: 753-0561  
e-mail: [nso.orchestra@nso.nfld.net](mailto:nso.orchestra@nso.nfld.net)