

NEWFOUNDLAND
SYMPHONY
ORCHESTRA

12 . 13 Season

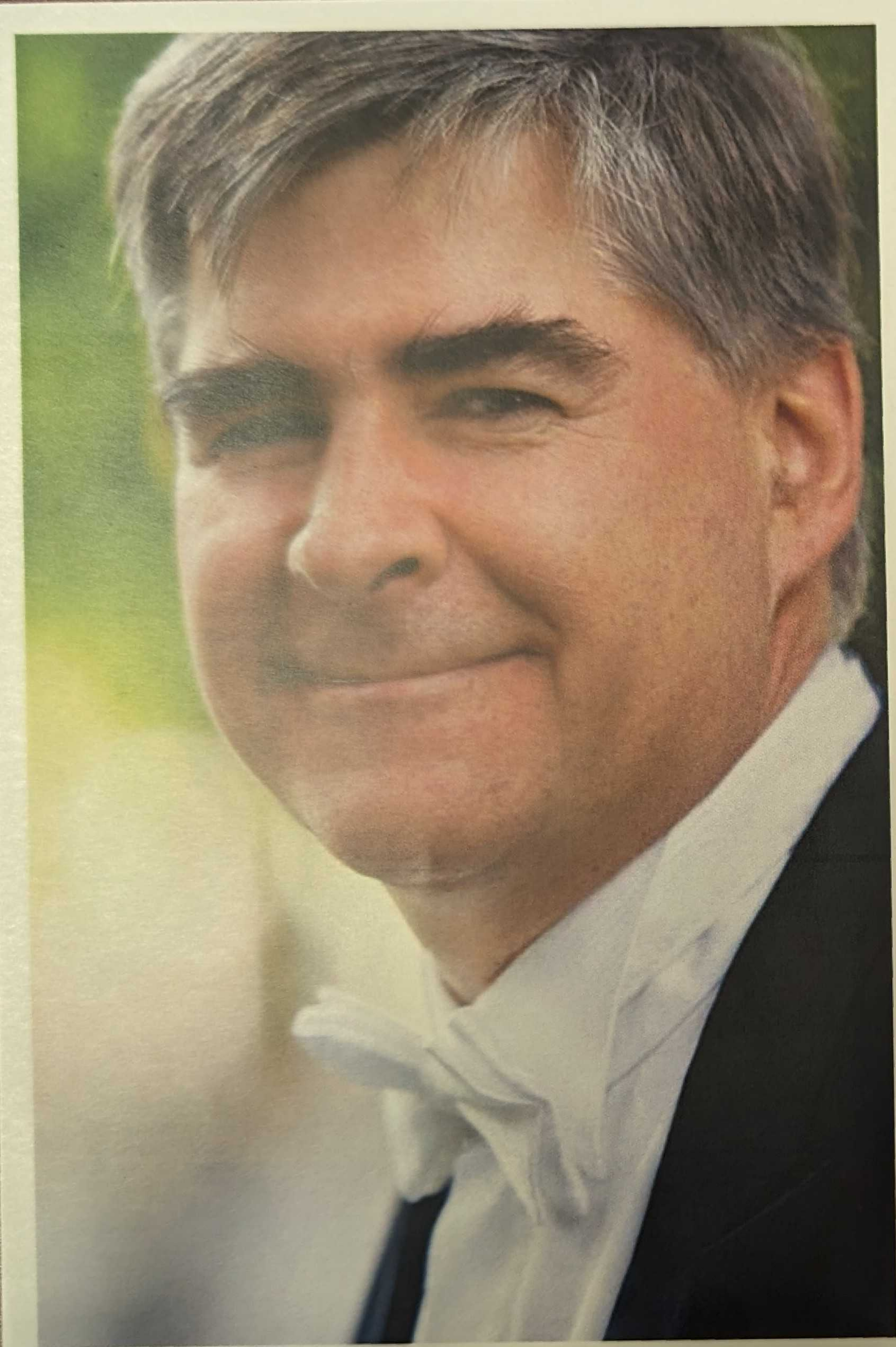
Bring it on!



NSO
NEWFOUNDLAND SYMPHONY ORCHESTRA

Marc David *Music Director*

To subscribe: 709.722.4441 nso-music.com



I am proud to present the Newfoundland Symphony Orchestra's exciting 2012/13 Season to you... our friends and supporters. Apart from showcasing our own fine musicians, this season's Masterworks, Sinfonia, Recital, and Pops series feature outstanding guest artists of both international and local renown. From Tchaikovsky's 1812 Overture to Lehár's Merry Widow... from Bubl   to Broadway... there promises to be something for everyone.

While each season is a new beginning, 2012/13 is particularly so as it offers me the immense pleasure of conducting all NSO concerts. I look forward to seeing you again soon.

Thank you for sharing the stage with us!

A handwritten signature in black ink, consisting of a series of loops and a long horizontal stroke.

Marc David *Music Director*

SUBSCRIBER INFO

How to order:

BY PHONE:
709.722.4441

IN PERSON:
3rd Floor, Arts & Culture Centre, North Wing

BY MAIL:
PO Box 1854, St. John's, NL A1C 5P9

nso-music.com

Benefits:

FABULOUS SEATS

- First choice of best seats

FANTASTIC SAVINGS

- Save up to 25% off regular ticket prices

FREE TICKET EXCHANGES

- Last minute change of plans? No problem.
Give us a call and we'll be happy to exchange.*

*Some conditions apply.

SUBSCRIPTION SALES CLOSE ON AUGUST 24th; SUBSCRIBE BEFORE MAY 31st & SAVE!

Masterworks Series

Marc David conductor

Featured on
Changing Seasons -
2012 Juno Award
Winner for Best
Contemporary Jazz
Album of the Year.



Mark Fewer



Jean-François Lapointe



Alice Macgregor

1 Friday, September 28, 2012
Arts & Culture Centre • 8pm



Opening Night! FALL FARE

Mark Fewer *violin*

Ridout • Fall Fair

Beethoven • Violin Concerto, Op. 61, D Major

Tchaikovsky • 1812 Overture, Op. 49, E-flat Major

2 Friday, November 16, 2012
Basilica of St. John the Baptist • 8pm



REQUIEM ÆTERNAM

Jean-François Lapointe *baritone*

Alice Macgregor *treble*

Shallaway

Philharmonic Choir of the NSO

Fauré • Requiem, Op. 48, D minor

• Pélleas et Mélisande Suite, Op. 80

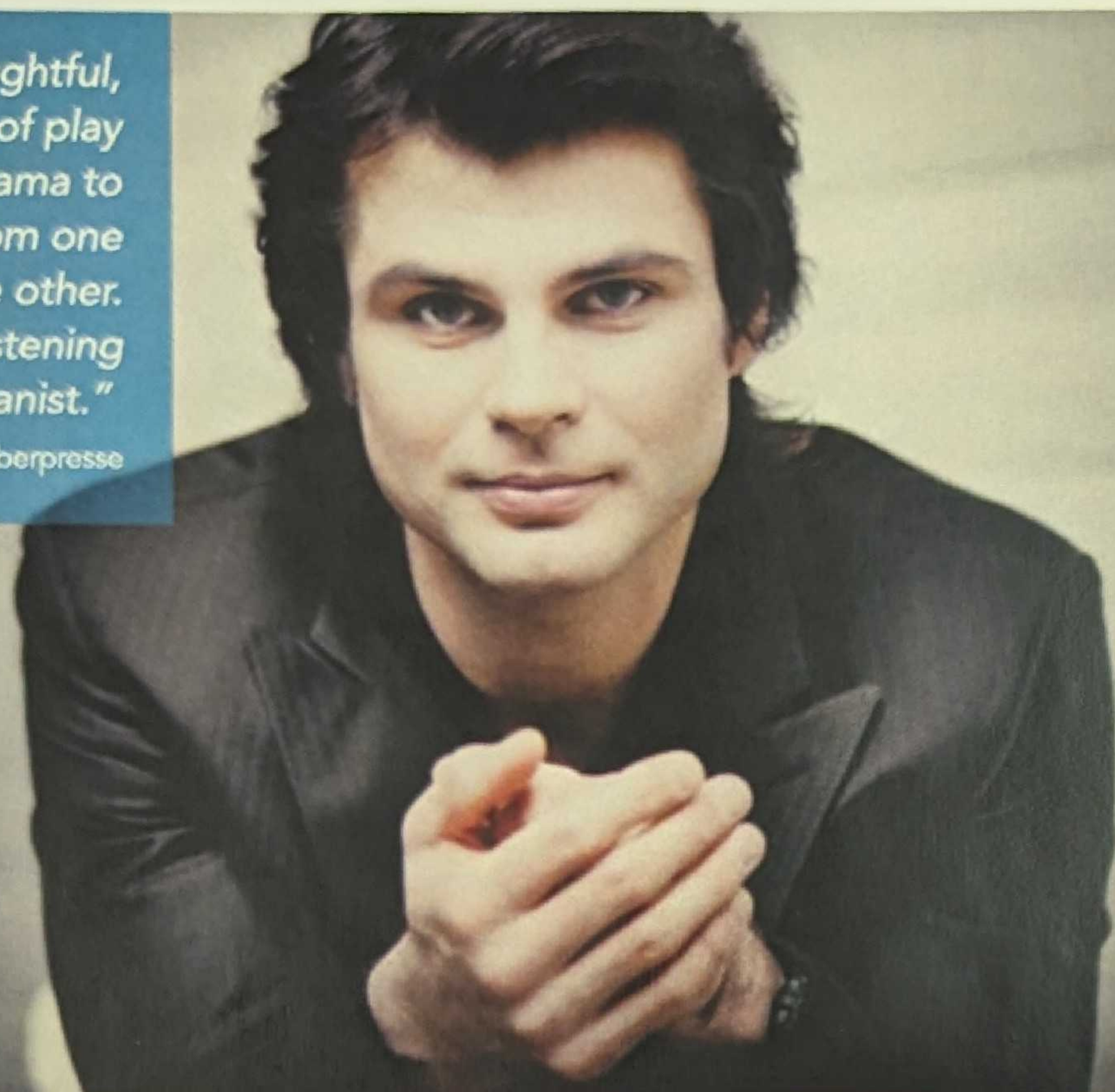
• Four Songs

Tickets: A: Adult \$45 / Senior \$40; B: Adult \$35 / Senior \$30

SUBSCRIPTION SALES CLOSE ON AUGUST 24th; SUBSCRIBE BEFORE MAY 31st & SAVE!

"Inspired, thoughtful,
with a clarity of play
allowing drama to
circulate from one
hand to the other.
Yes, I was listening
to a great pianist."

Claude Gingras - Cyberpresse



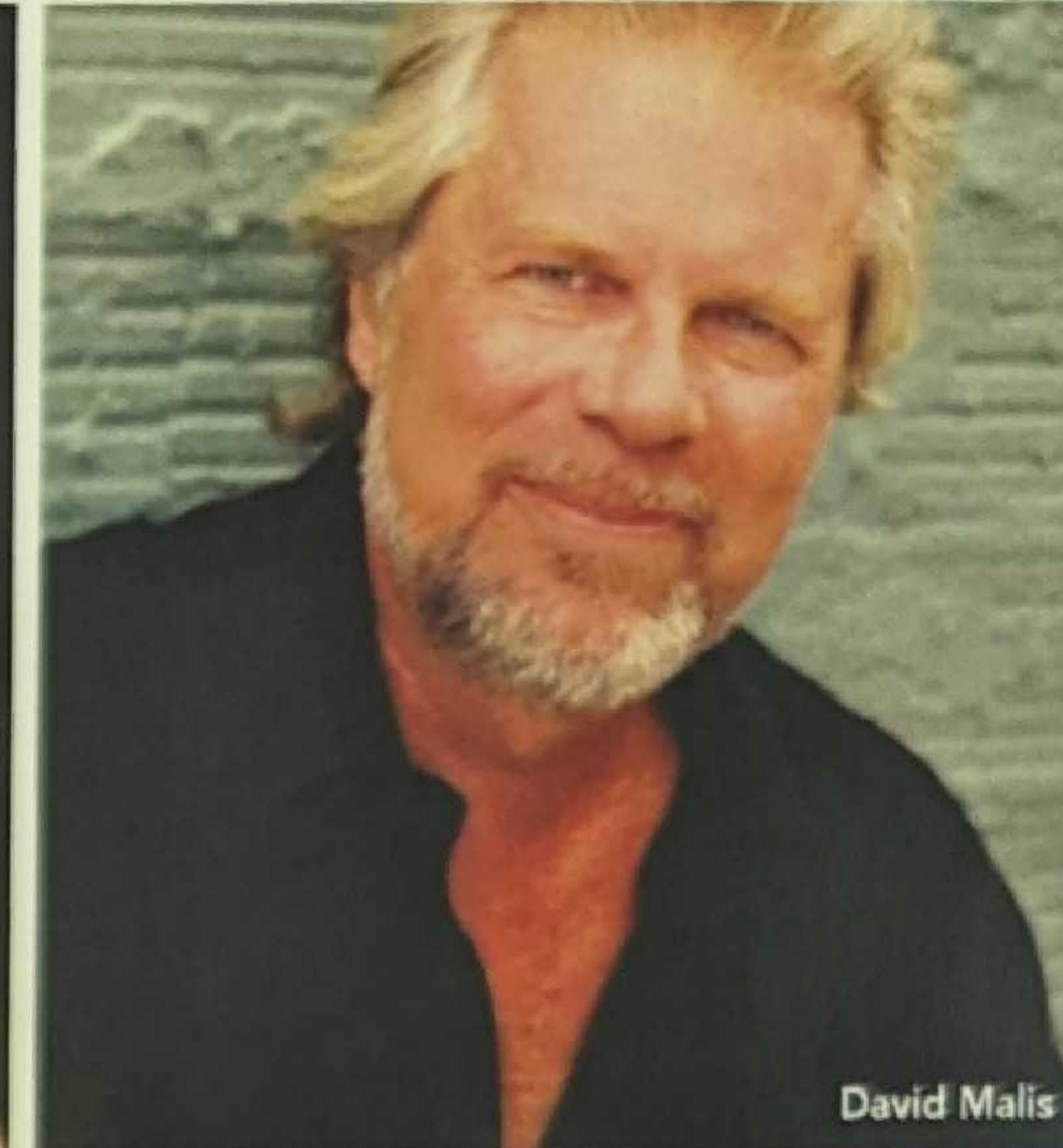
Serhiy Salov

"Sally Dibblee...
is top-notch, her
soaring soprano
a delight and
her acting full
of nuance."

Edmonton Sun



Sally Dibblee



David Malis



Owen McCausland



Calvin Powell



Caroline Schiller

3

Friday, February 8, 2013

Arts & Culture Centre • 8pm

 **Husky Energy**

SERHIY PLAYS SERGEI

Serhiy Salov *piano*

Britten • Canadian Carnival Overture, Op. 19

Prokofiev • Excerpts from Romeo & Juliet Suites

Rachmaninoff • Piano Concerto No. 3, Op. 30, D minor

4

Friday, March 22, 2013

Arts & Culture Centre • 8pm

THE MERRY WIDOW EVENING AT THE OPERETTA

Sally Dibblee *soprano*

David Malis *baritone*

Lehár • The Merry Widow

Owen McCausland *tenor*

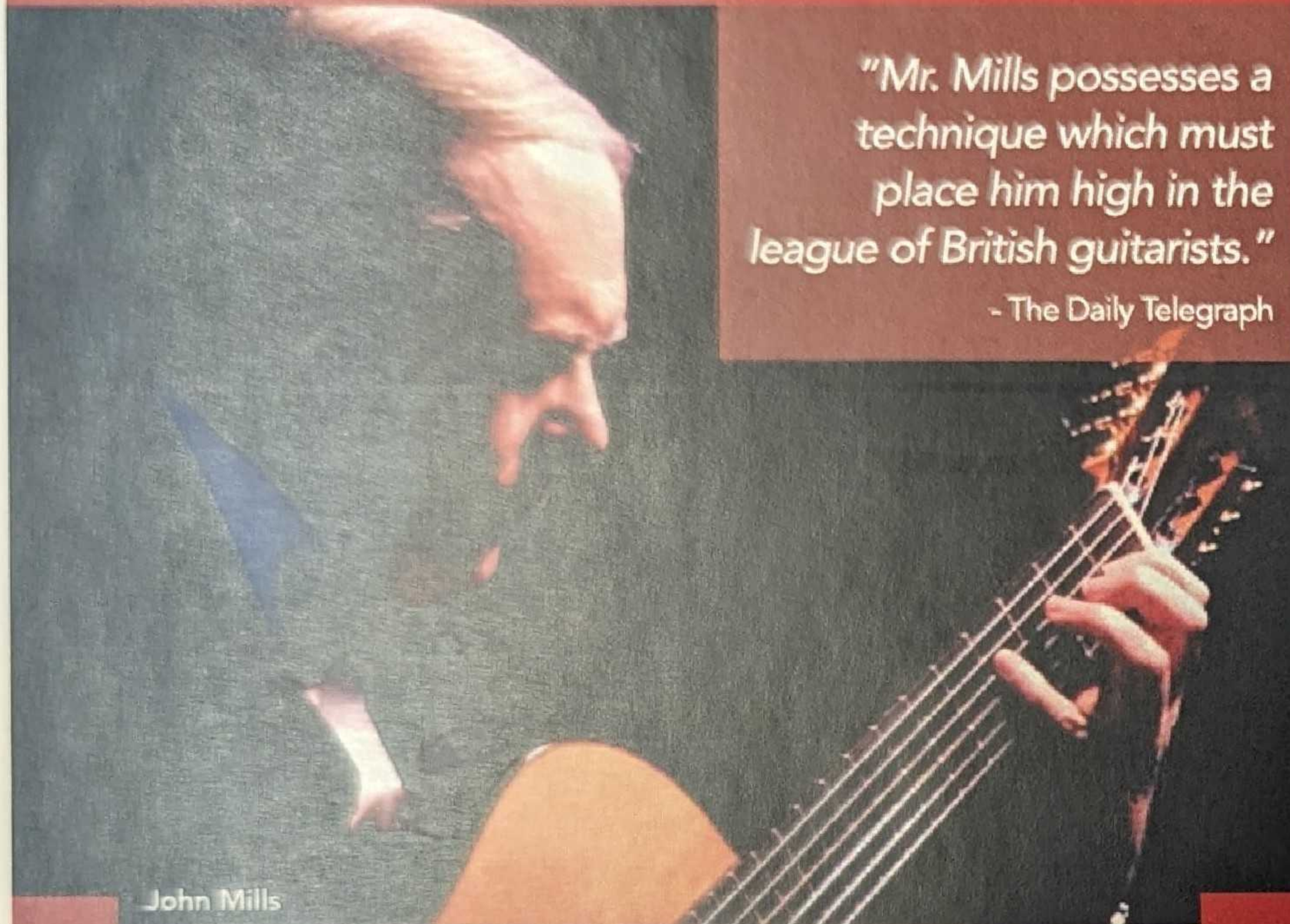
Caroline Schiller *soprano*

Calvin Powell *baritone*

Single Tickets on sale August 27 at the Arts & Culture Centre Box Office: 729.3900 or online: artsandculturecentre.com

SUBSCRIPTION SALES CLOSE ON AUGUST 24th; SUBSCRIBE BEFORE MAY 31st & SAVE!

Sinfonia Series



John Mills

"Mr. Mills possesses a technique which must place him high in the league of British guitarists."

- The Daily Telegraph



Lady Cove

1 Saturday, October 13, 2012
Cook Recital Hall, MUN • 8pm

SWEET SERENADE

Marc David *conductor*

Bach • Orchestral Suite No. 3, D Major, BWV 1068

Bissell • Three Pieces for Strings

Tchaikovsky • Serenade for Strings, Op. 48, C Major

2 Saturday, January 12, 2013
Cook Recital Hall, MUN • 8pm

OLD FRIENDS



Marc David *conductor*

John Mills *guitar*

Peter Gardner *guest conductor*

Elgar • Serenade, Op. 20, E minor

Hope • Three Divertimenti for Guitar & Strings

Gardner • O'Carolan Concerto

Vaughan Williams • Fantasia on a Theme by Thomas Tallis

3 Saturday, March 2, 2013
Cochrane St. United Church • 8pm

STABAT MATER

Marc David *conductor*
Lady Cove Women's Choir

Respighi • Antiche danze ed arie per liuto, Suite No. 3

Pergolesi • Stabat Mater

Tickets: A: Adult \$32 / Senior \$27 Single Tickets on sale August 27 at the Arts & Culture Centre Box Office: 729.3900 or online: artsandculturecentre.com

SUBSCRIPTION SALES CLOSE ON AUGUST 24th; SUBSCRIBE BEFORE MAY 31st & SAVE!

Recital Series



Featuring the Atlantic String Quartet

Alison Black violin • Nancy Case-Oates violin
Clayton Leung viola • Theo Weber cello

1 Sunday, October 21, 2012

Cook Recital Hall, MUN • 2pm

Haydn • String Quartet in E-flat, Op. 33, No. 2 "The Joke"
Estacio • Test Run
Brahms • String Quartet No. 3, Op. 67, B-flat Major

2 Sunday, November 25, 2012

Cook Recital Hall, MUN • 2pm

Beethoven • String Quartet No. 11, Op. 95, F minor
Shostakovich • String Quartet No. 8, Op. 110, C minor
Tchaikovsky • String Quartet No. 1, Op. 11, D Major

3 Sunday, February 10, 2013

Cook Recital Hall, MUN • 2pm

Serhiy Salov piano

Britten • String Quartet No. 1, Op. 25, D Major
Shostakovich • Piano Quintet, Op. 57, G minor

4 Sunday, April 14, 2013

Cook Recital Hall, MUN • 2pm

Paul Bendzsa clarinet Frank Fusari bandoneon

Piazzolla • Four for Tango for String Quartet
• Oblivion for clarinet & string quartet
• Five Tango Sensations for bandoneon & string quartet
D'Rivera • Preludio y Merengue






Tickets: Recital #1, 2, 4 - Adult \$20 / Senior \$17; #3 - \$29 / \$25 On sale August 27 at the Arts & Culture Centre Box Office: 729-3900 or online: artsandculturecentre.com

SUBSCRIPTION SALES CLOSE ON AUGUST 24th; SUBSCRIBE BEFORE MAY 31st & SAVE!



Mark Critch

 **Hibernia** in association with  and  presents

THE NSO HIBERNIA GALA

The NSO's 22nd Annual Fundraising Gala & Showcase of Outstanding Newfoundland & Labrador Artists.

Mark Critch *host* • Marc David *conductor*

Friday, October 26, 2012 Arts & Culture Centre • 8pm

Tickets: \$100 Call 722.4441

Charitable portion of the ticket is tax deductible.

POPS...

HOLIDAY POPS

Bring on the Season!

Friday, November 30, 2012

Cochrane St. United Church • 8pm

Marc David *conductor* • Eleanor McCain *vocals*

Tickets: Adult \$30 / Senior \$25



SUBSCRIPTION SALES CLOSE ON AUGUST 24th; SUBSCRIBE BEFORE MAY 31st & SAVE!

AND MORE POPS!

SUNCOR ENERGY BIG BAND SHOW

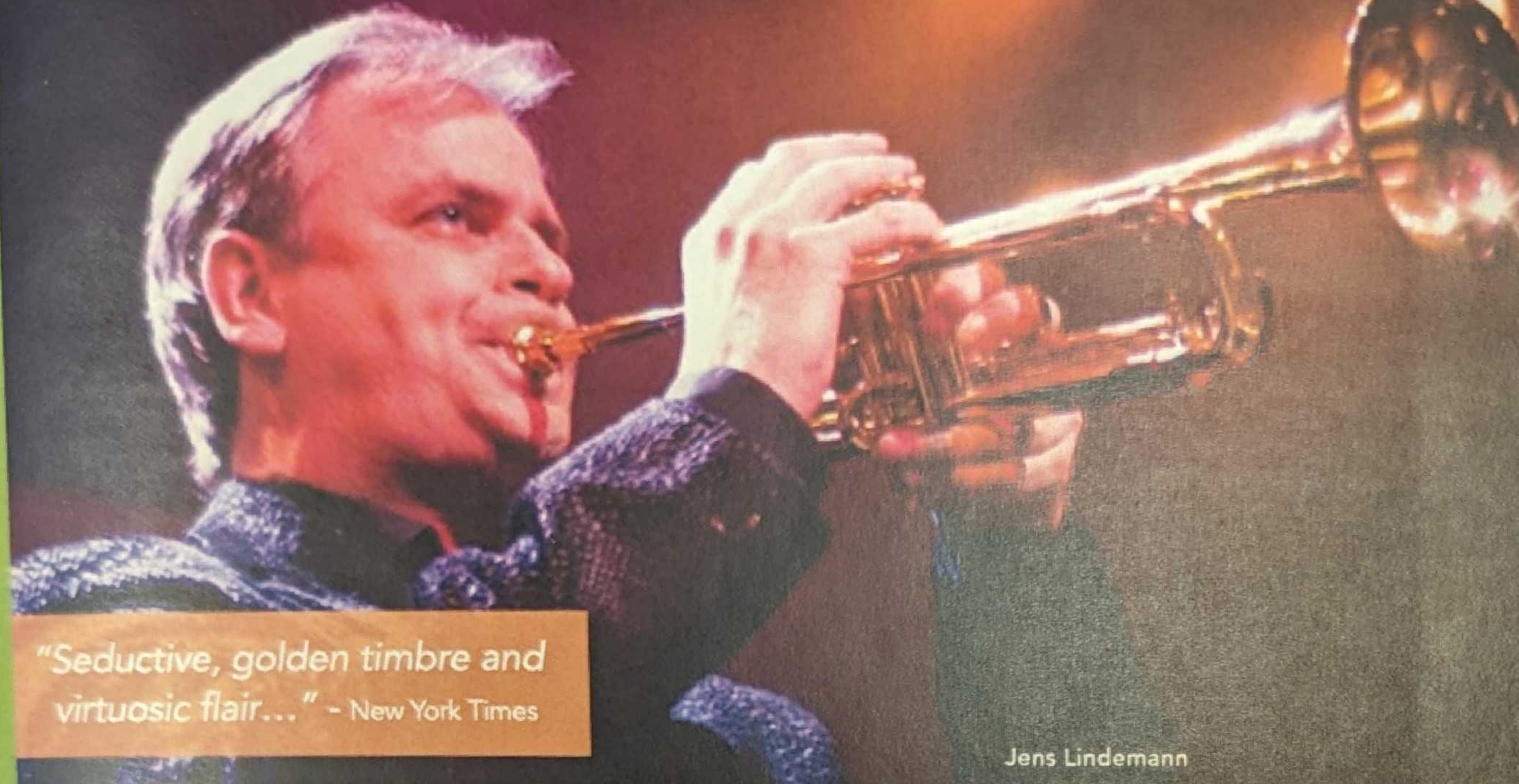
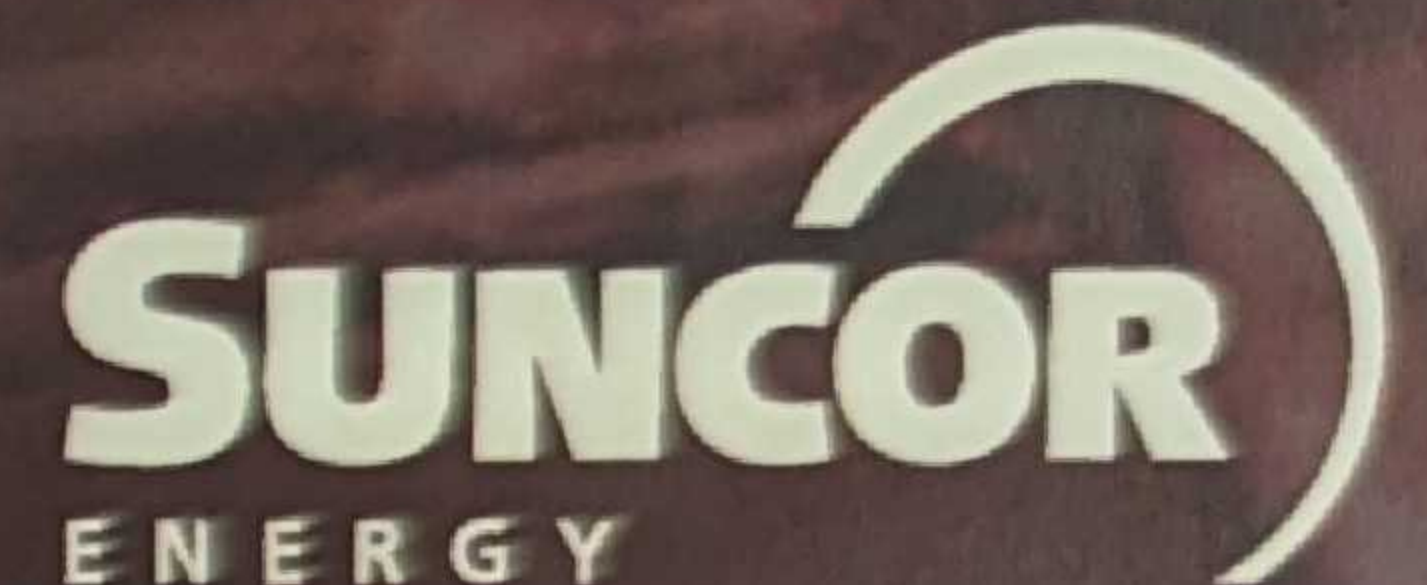
BRASSFIRE & BUBLÉ

A tip of the fedora to the Era of Swing and a medley of Bubl  favourites!

Friday & Saturday, January 25 & 26, 2013
Arts & Culture Centre • 8pm

Marc David conductor
Jens Lindemann trumpet
Steve Power vocals

Tickets: Adult \$45 / Senior \$40



"Seductive, golden timbre and virtuosic flair..." - New York Times

Jens Lindemann

"WHEN YOU LEAST EXPECT IT"

A musical celebration of the dreams we dream, the mistakes we make, and the curveballs life has in store for us.

Featuring new music by David Spencer and 8-time Academy Award Winner Alan Menken, 2011 Drama Desk Award Winner Adam Mathias and Jonathan Monro. Plus favorites from *The Fantasticks*, *The Light in the Piazza*, *Chess*, *Anything Goes* and *The Umbrellas of Cherbourg*.

Friday, April 19, 2013
Arts & Culture Centre • 8pm

Marc David conductor
Jonathan Monro with special guests
Krystin Pellerin and Julia Halfyard

Tickets: Adult \$45 / Senior \$40



Julia Halfyard



Krystin Pellerin



Jonathan Monro

SUBSCRIPTION SALES CLOSE ON AUGUST 24th; SUBSCRIBE BEFORE MAY 31st & SAVE!



Kimy Mc Laren



Vivien Shotwell



David Pomeroy



Gordon Bintner

COX & PALMER

presents

HANDEL'S MESSIAH

Friday & Saturday,
December 14 & 15, 2012

Basilica of St. John the Baptist • 8pm

Marc David *conductor*
Kimy Mc Laren *soprano*
Vivien Shotwell *mezzo soprano*
David Pomeroy *tenor*
Gordon Bintner *baritone*
Philharmonic Choir of the NSO

Tickets: Adult \$26 / Senior \$23

SUBSCRIPTION SALES CLOSE ON AUGUST 24th; SUBSCRIBE BEFORE MAY 31st & SAVE!

UNDER 30? Do we have a deal for you!

FAMILY PLAN

The NSO offers a special \$10 ticket price to children from 6-14 when accompanied by an adult. Whether you're a season subscriber or a single ticket purchaser, this unbeatable offer is for you!

GO-NSO

Sign up for a free membership and enjoy premium concerts for \$10! To join, call the NSO office at 722.4441. This offer is available to students from 15-29.



SYMPHONY GOES TO SCHOOL

Designed to help foster a lifelong love of orchestral music, Symphony Goes to School offers top notch music education materials to Grade 5 & 6 students. As an added bonus, each child has the opportunity to attend all Masterworks concerts at no charge when accompanied by an adult who can purchase a Masterworks subscription for only \$60.



SUBSCRIPTION SALES CLOSE ON AUGUST 24th; SUBSCRIBE BEFORE MAY 31st & SAVE!

SERIES & PRICING

		EARLY BIRD - BEFORE MAY 31		AFTER MAY 31	
		A Section	B Section	A Section	B Section
Save 20% (25% before May 31)					
Connoisseur Package - <i>includes all 4 Masterworks, 3 Sinfonias, 4 Recitals, Messiah, Big Band, Pops and Holiday Pops</i>	Adult	\$356	\$329	\$379	\$350
	Senior	\$310	\$266	\$330	\$283
Save 10% (15% before May 31)					
Snowbird Package - <i>Sept. to Dec. includes MW 1&2, Sinfonia 1, Recital 1&2, Holiday Pops and Messiah</i>	Adult	\$186	\$169	\$196	\$178
	Senior	\$160	\$143	\$171	\$153
Masterworks Series <i>includes all 4 Masterworks concerts</i>	Adult	\$153	\$119	\$162	\$126
	Senior	\$136	\$102	\$144	\$108
Sinfonia Series <i>includes all 3 Sinfonia concerts</i>	Adult	\$82	-	\$86	-
	Senior	\$69	-	\$73	-
Recital Series <i>includes all 4 Recitals</i>	Adult	\$76	-	\$80	-
	Senior	\$65	-	\$68	-

All prices include 13% HST and Arts and Culture Centre service fees.

SUBSCRIPTION SALES CLOSE ON AUGUST 24th; SUBSCRIBE BEFORE MAY 31st & SAVE!

SUBSCRIPTION ORDER FORM

PACKAGES & SERIES

PACKAGES & SERIES		Section A/B	Price Adult/Senior	Number of Subscriptions	Total Amount
Connoisseur Package - includes all 4 Masterworks, 3 Sinfonia, 4 Recitals, Messiah, Big Band and 2 Pops	Messiah <input type="checkbox"/> Fri <input type="checkbox"/> Sat	Big Band <input type="checkbox"/> Fri <input type="checkbox"/> Sat	\$		\$
Snowbird Package - Sept. to Dec. includes MW 1&2, Sinfonia 1, Recital 1&2, Holiday Pops and Messiah	Messiah <input type="checkbox"/> Fri <input type="checkbox"/> Sat		\$		\$
Masterworks Series includes all 4 Masterworks concerts			\$		\$
Sinfonia Series includes all 3 Sinfonia concerts		A	\$		\$
Recital Series includes all 4 Recitals		A	\$		\$
U-PICK Series Choose a min. of 4 / max. of 8 concerts from our Masterworks, Sinfonia or Recital Series	Please select U-PICK on reverse side				\$
SUBTOTAL of subscription series/packages					\$
Save 10% on Messiah, Big Band, Pops & Holiday Pops when you purchase with your subscription!	Add Messiah to Masterworks, Sinfonia, Recital or U-PICK (\$23 / \$21)		Messiah <input type="checkbox"/> Fri <input type="checkbox"/> Sat		\$
	Add Big Band to Masterworks, Sinfonia, Recital or U-PICK (\$40 / \$36)		Big Band <input type="checkbox"/> Fri <input type="checkbox"/> Sat		\$
	Add Pops to Masterworks, Sinfonia, Recital or U-PICK (\$40 / \$36)				\$
	Add Holiday Pops to Masterworks, Sinfonia, Recital or U-PICK (\$27 / \$23)				\$
	Add Gala to any subscription package for \$100.00				\$
	I would like to support the NSO by making a charitable gift of: Charitable registration # 12207 6227 RR0001				\$
TOTAL (all prices include 13% HST and ACC service fees)					\$



SUBSCRIPTION ORDER FORM

U-PICK SERIES

Pick a min. of 4 max. of 8	Full Price		Number of Sub- scriptions	Total
	A Adult/Senior	B Adult/Senior		
MW#1	\$45 / \$40	\$35 / \$30		\$
MW#2	\$45 / \$40	\$35 / \$30		\$
MW#3	\$45 / \$40	\$35 / \$30		\$
MW#4	\$45 / \$40	\$35 / \$30		\$
Sin 1	\$32 / \$27			\$
Sin 2	\$32 / \$27			\$
Sin 3	\$32 / \$27			\$
Rec 1	\$20 / \$17			\$
Rec 2	\$20 / \$17			\$
Rec 3	\$29 / \$25			\$
Rec 4	\$20 / \$17			\$
SUBTOTAL				\$
LESS 10%			-	\$
U-PICK TOTAL (include on other side)				\$

MS. MRS. MISS MR. DR. (CIRCLE ONE) NAME

EMAIL

ADDRESS

CITY

PROVINCE

POSTAL CODE

DAY PHONE

EVENING PHONE

I'm a NEW subscriber

I'm a RETURNING subscriber

SEAT#

METHOD OF PAYMENT

Cheque enclosed (payable to Newfoundland Symphony Orchestra)

VISA

MASTERCARD

CREDIT CARD NUMBER

EXP. DATE

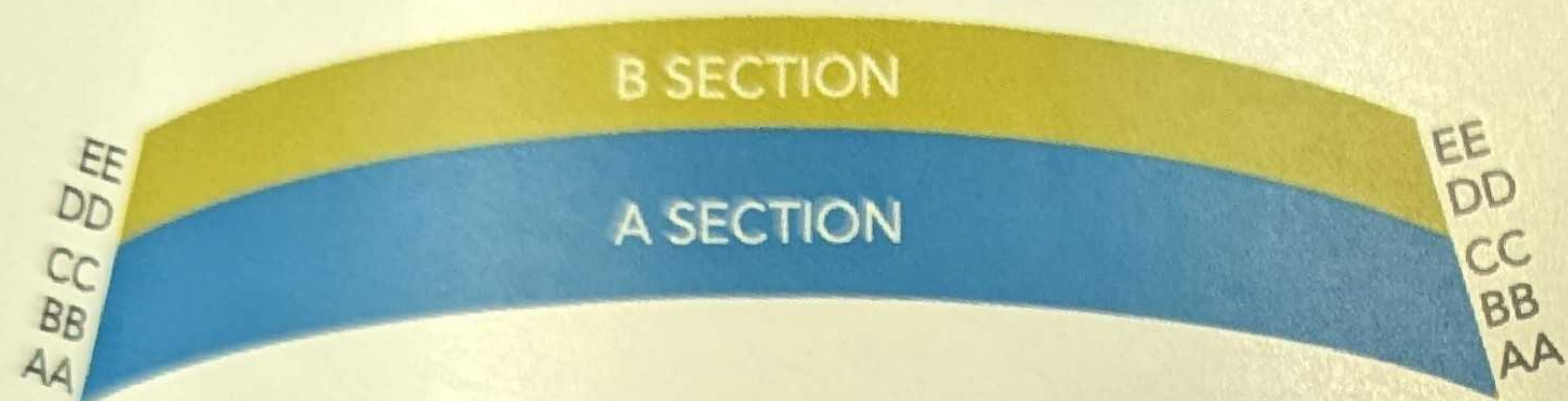
SIGNATURE

PRIVACY POLICY: We respect the privacy of individuals and want to ensure that any personal information provided remains confidential and secure. Any personal information provided by our ticket buyers and subscribers will not be shared with any other businesses or outside organizations.

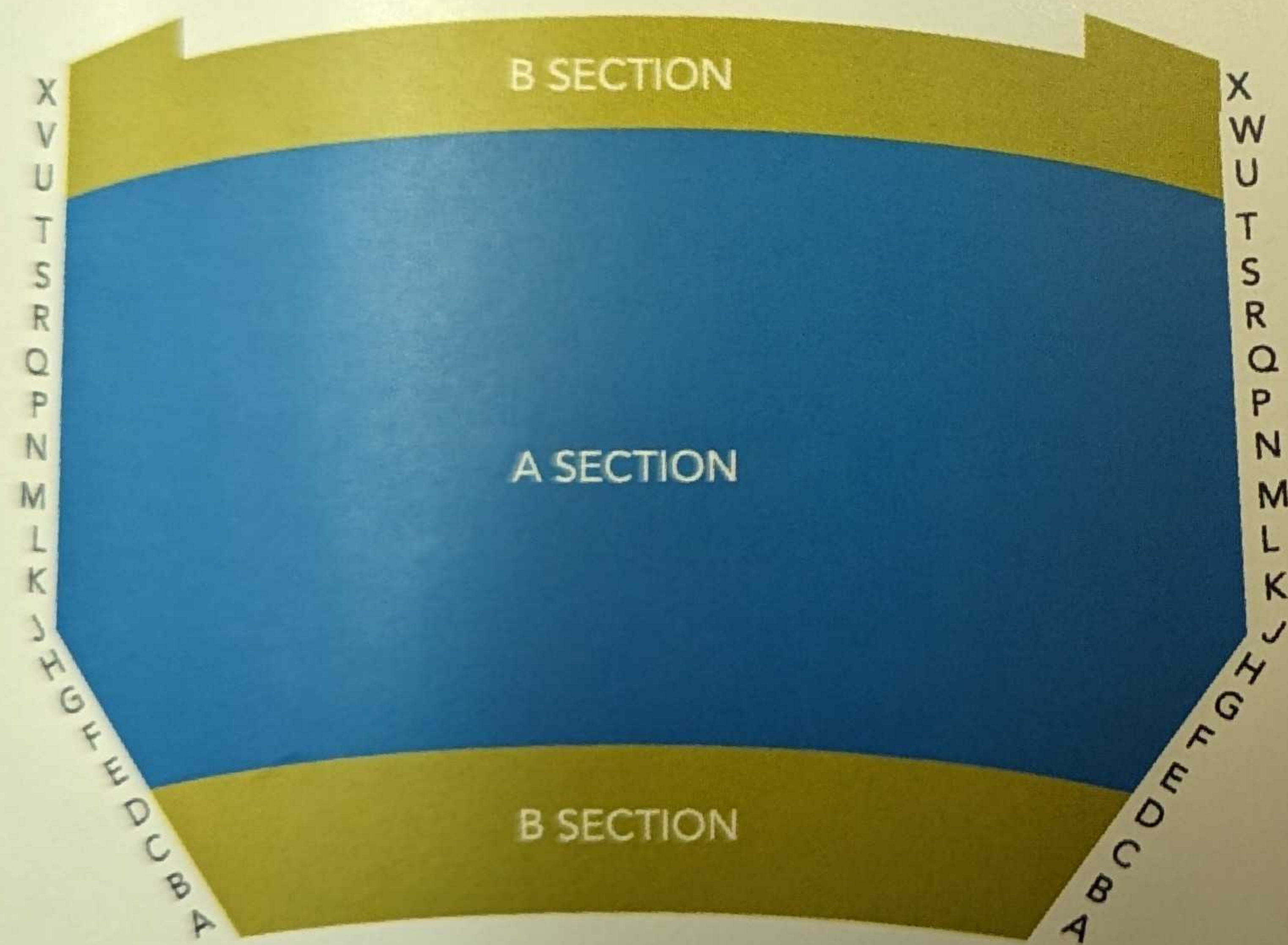
CHOOSE YOUR SEATS

ARTS & CULTURE CENTRE

BALCONY



MAIN FLOOR



STAGE

IMPORTANT DATES:

May 31st, 2012: Early Bird Savings Deadline

August 24th, 2012: Subscription Renewal Deadline

August 27th, 2012: Single Tickets Go on Sale

QUESTIONS? Contact us:

BY PHONE:
709.722.4441

IN PERSON:
3rd Floor, Arts & Culture Centre, North Wing

BY MAIL:
PO Box 1854, St. John's, NL A1C 5P9

nso-music.com

NEWFOUNDLAND SYMPHONY ORCHESTRA

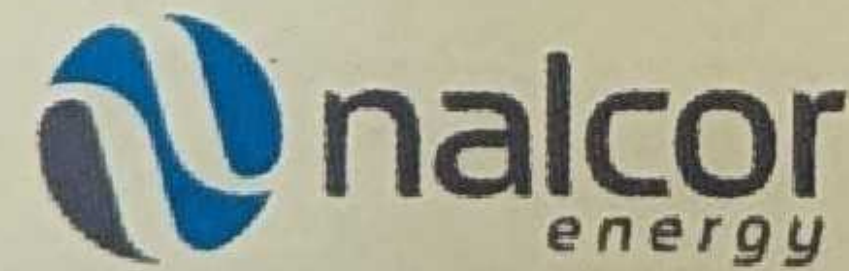
12.13 Season



COX & PALMER



ST. JOHN'S



NEWALTA



Deloitte

The Telegram

DIAMOND DESIGN
What's your occasion?



ERNST & YOUNG



Husky Energy

ROGERS

REDPOLL FOUNDATION

Gill Ratchliffe Foundation



The Lloyd Carr-Harris Foundation

Presentation Sisters

Newfoundland Symphony Orchestra
3rd Floor, Arts & Culture Centre, North Wing
PO Box 1854
St. John's, NL A1C 5P9
t: 709.722.4441
f: 709.753.0561
e: info@nso-music.com

nso-music.com



NSO
NEWFOUNDLAND SYMPHONY ORCHESTRA

Marc David Music Director