



Newfoundland Symphony Orchestra
2014/15 Season
to subscribe • 709.722.4441 • nso-music.com

MAKING WAVES

Dear Music Lovers,

As Music Director of the Newfoundland Symphony Orchestra, it is my privilege to wish you all a warm welcome to our exciting 2014/15 season!

From harpsichord to accordion, this season has something for everyone. And our guest artists? Only the best will do... great communicative gifts, extraordinary musicianship, brilliant concert experiences.

St. John's feels very much like home to me and even after twenty-two years, working with these incredible musicians and experiencing our growth and development together as a group remains one of my greatest joys.

To both old friends and new, I look forward to the pleasure of your company throughout the season.



MARC DAVID *Music Director*

On the front cover: NSO Violist Chantelle Jubenville in Salmon Cove, NL. Photo by Greg Locke



Subscriber Information

Subscription Sales close on
Friday, August 29, 2014

*Some conditions apply



How to order

BY PHONE
709.722.4441

IN PERSON
3rd Floor, Arts & Culture Centre

BY MAIL
P.O. Box 1854, St. John's, NL A1C 5P9

Benefits

FABULOUS SEATS
First choice of best seats

FANTASTIC SAVINGS
Save up to 20% off regular ticket prices

FREE TICKET EXCHANGES
Change of plans? No problem, call us*

Masterworks Series

8PM • ARTS & CULTURE CENTRE • MARC DAVID *conductor*

TICKETS A: \$45 / \$40 • B: \$35 / \$30

Masterworks 1: *Triple Threat*

Friday, September 19, 2014



TRIO BENETRI:

LYNN KUO *violin*

RAFAEL HOEKMAN *cello*

THOMAS YEE *piano*

BACH

*Wachet auf, ruft uns
die Stimme, BWV645*

BEETHOVEN

*Concerto for Violin, Cello,
and Piano, Op. 56, C Major*

BRAHMS

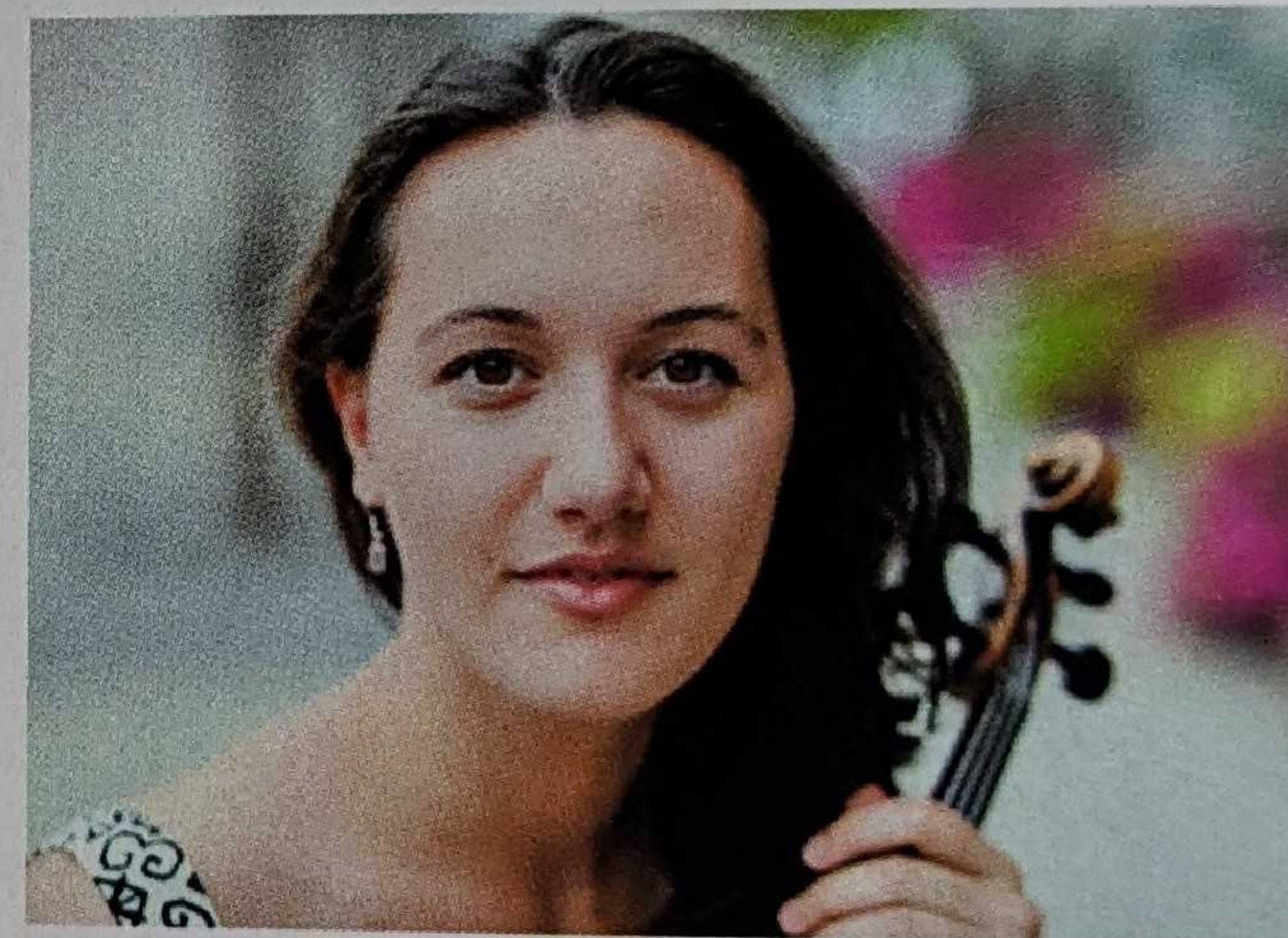
Symphony No. 2, Op. 73

PRESENTED BY

The Telegram

Masterworks 2: *The World Remembers*

Friday, November 14, 2014



YOLANDA BRUNO *violin*

PHILHARMONIC CHOIR
OF THE NSO

PRESENTED BY



HOLST

Mars (fr. The Planets, Op. 32)

BARBER

Violin Concerto, Op. 14

WILLIAMS

Schindler's List

THE WORLD REMEMBERS

NAC Choral Commission

BRITTEN

War Requiem, Op. 66 (excerpts)

JENKINS

*The Armed Man:
A Mass for Peace (excerpts)*

Masterworks 3: *Main Squeeze*

Friday, February 13, 2015



ALEXANDER SEVASTIAN

accordion

HARTY

Suite from Handel's Water Music

FORSYTH

Concerto for Accordion

WEBER

*Konzertsüeck for Piano,
Op. 79, F minor*

ELGAR

Enigma Variations, Op. 36

PRESENTED BY



Masterworks 4: *Oh Brother!*

Friday, March 27, 2015



NIKKI CHOOI *violin*

TIMOTHY CHOOI *violin*

STUDENT COMPOSER

Commissioned Work

BACH

*Concerto for Two Violins,
D minor, BWV1043*

RAVEL

Tzigane

CHAUSSON

Poème, Op. 25

BRITTEN

*The Young Person's Guide
to the Orchestra*

Elite Sinfonia Series

8PM • D.F. COOK RECITAL HALL, MEMORIAL UNIVERSITY • MARC DAVID *conductor*

TICKETS \$32 / \$27

 **elite**
audio visual & special events

Sinfonia 1: *Girl Meets Tuba*

Saturday, October 18, 2014



KAREN BULMER *tuba*

VAN BREE

Allegro for Four String Quartets, D minor

KOESTIER

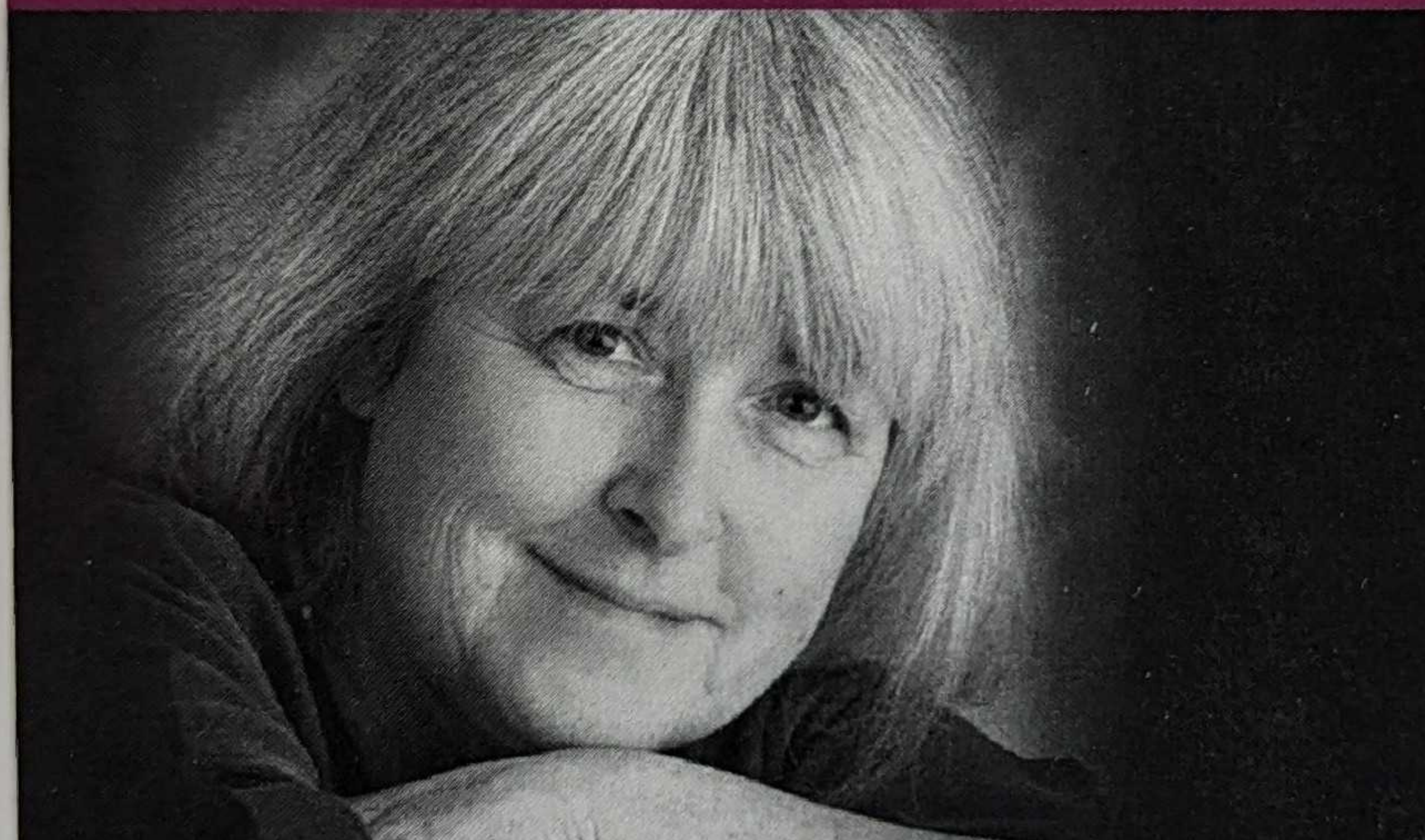
Concertino for Tuba, Op. 77

BULMER

Girl Meets Tuba

Sinfonia 2: *Welcome Bach*

Saturday, January 10, 2015



MARY O'KEEFE *harpsichord*

CARDY

Dreams of the Sidhe

BACH

*Harpsichord Concerto No. 3,
D Major, BWV1054*

DVOŘÁK

Serenade for Strings, E Major, Op. 22, B. 52

Sinfonia 3: *Guitar Hero...ine*

Saturday, March 7, 2015



SYLVIE PROULX *guitar*

VILLA-LOBOS

Bachianas Brasilieras, No. 9

PONCE

Concierto del sur

DE FALLA

Ritual Fire Dance

BIZET

Carmen Suite

Recital Series

8PM • D.F. COOK RECITAL HALL, MEMORIAL UNIVERSITY

TICKETS \$20 / \$17

Recital 1

Sunday, September 21, 2014

CONCERTMASTER

CANDIDATE *violin*

NANCY CASE-OATES *violin*

KATE READ *viola*

THEO WEBER *cello*

BEETHOVEN

*String Quartet, Op. 18,
No. 2, G Major*

SHOSTAKOVICH

*String Quartet No. 8,
Op. 110, C minor*

Recital 2

Sunday, November 16, 2014

CONCERTMASTER

CANDIDATE *violin*

NANCY CASE-OATES *violin*

KATE READ *viola*

THEO WEBER *cello*

BEETHOVEN

*String Quartet, Op. 18, No. 4, C
minor*

BORODIN

String Quartet No. 2

Recital 3

Sunday, February 15, 2015

CONCERTMASTER

CANDIDATE *violin*

NANCY CASE-OATES *violin*

KATE READ *viola*

THEO WEBER *cello*

BEETHOVEN

*String Quartet, Op. 18,
No. 5, A Major*

MENDELSSOHN

String Quartet, Op. 13

Recital 4

Sunday, March 29, 2015

CONCERTMASTER

CANDIDATE *violin*

NANCY CASE-OATES *violin*

KATE READ *viola*

THEO WEBER *cello*

BEETHOVEN

*String Quartet, Op. 18,
No. 6, B Major*

SCHUBERT

*String Quartet No. 13,
Op. 29, D. 804 'Rosamunde'*

As the NSO completes its audition process for a new concertmaster, each Recital will feature a different candidate who will play first violin as well as a solo piece from the Canadian repertoire catalogue.

Subscription sales close on Friday August 29, 2014

NSO Hibernia Gala

in association with NSB Group

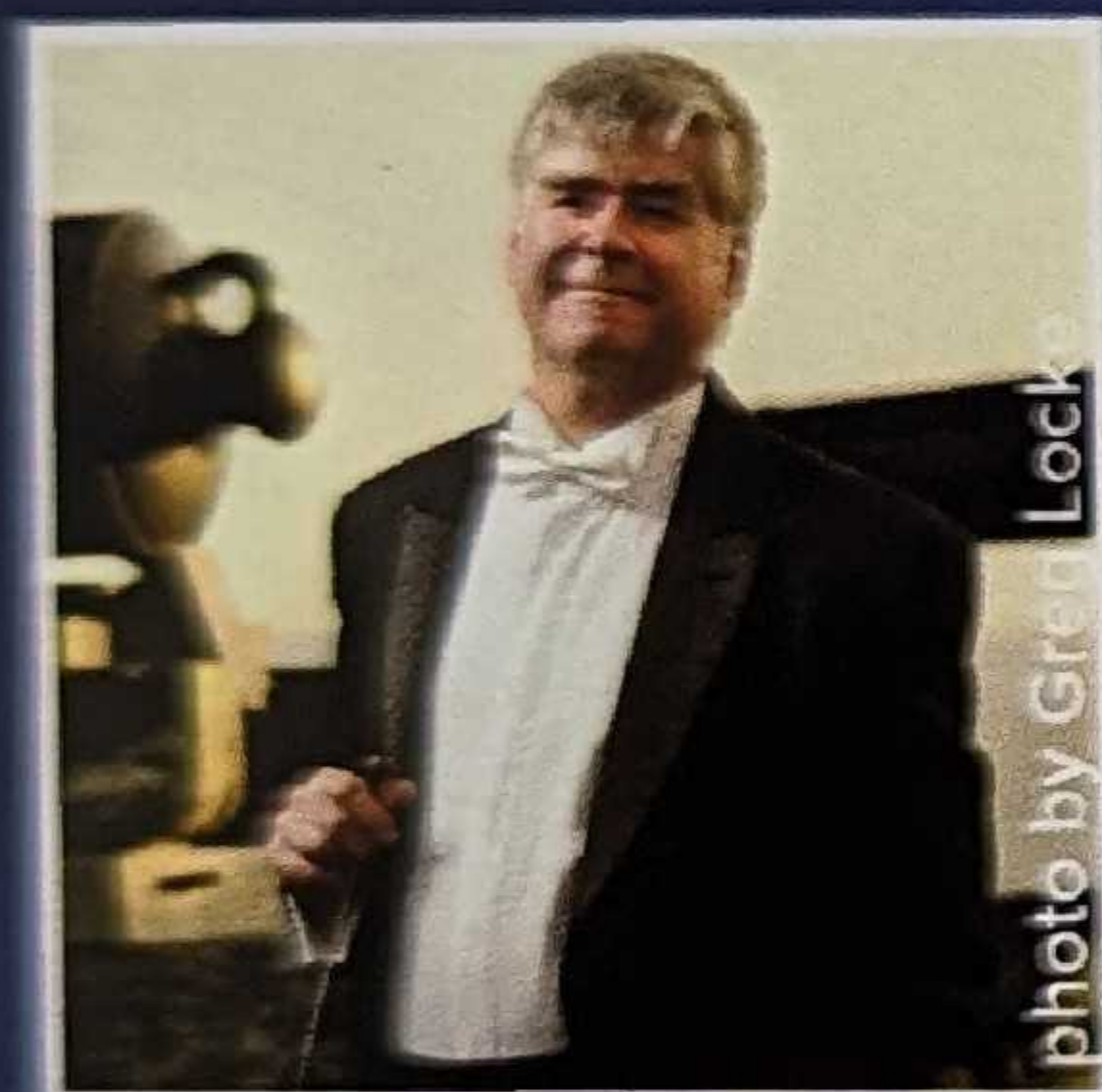
FRIDAY, OCTOBER 24, 2014

8PM • ARTS & CULTURE CENTRE

Join us for the NSO's 24th Annual Fundraising Gala!



MARK CRITCH
host



MARC DAVID
conductor

Tickets \$100 • call 722-4441

Charitable portion of the ticket is tax deductible



CIBC
Wood Gundy
PROUDLY PRESENTS

The NSO Silver Ball

in support of the Newfoundland Symphony Orchestra

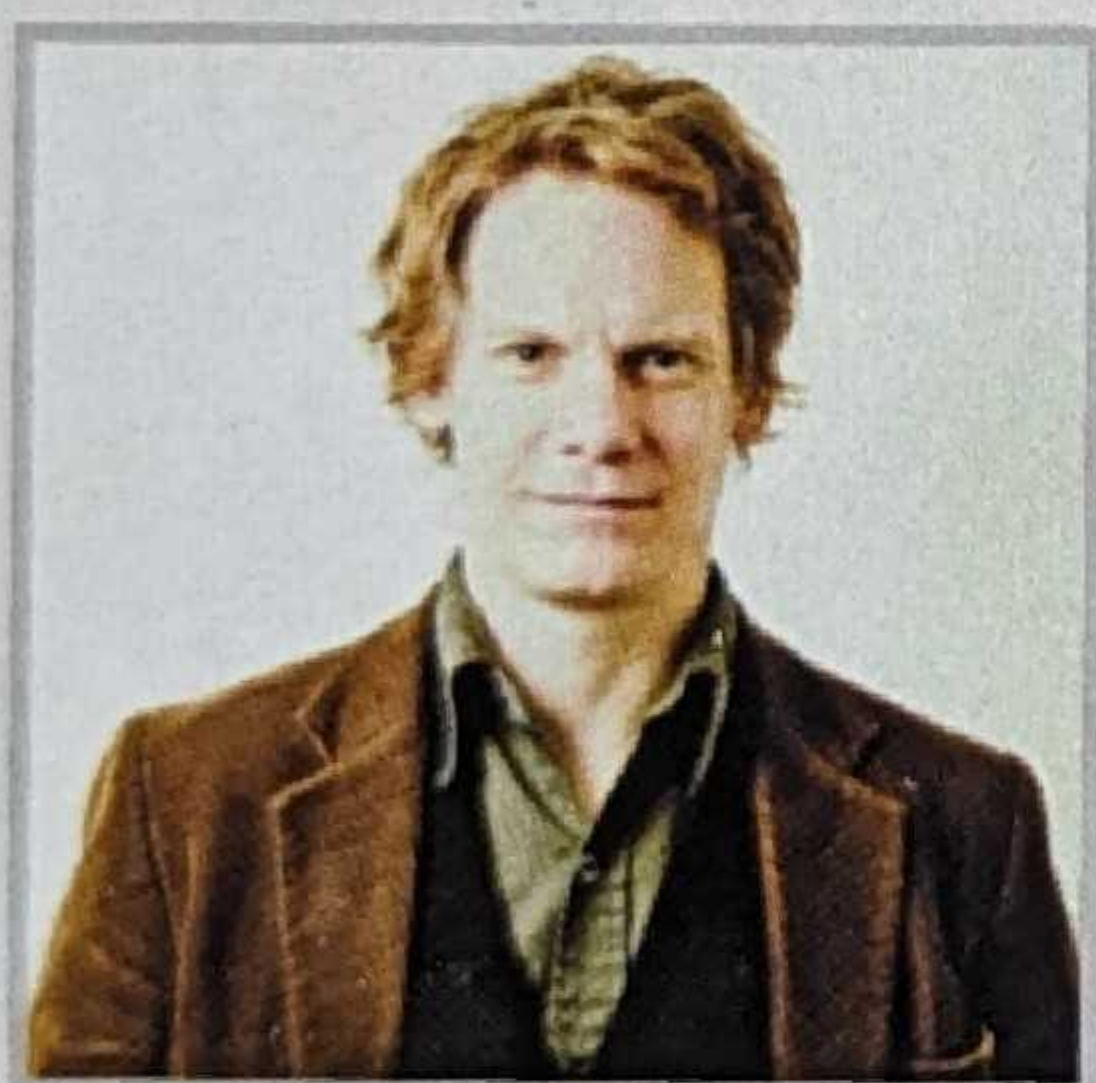
Saturday, February 7, 2015

Delta St. John's Hotel & Conference Centre

Suncor Energy Big Band Show

FRIDAY, JANUARY 30 & SATURDAY, JANUARY 31, 2015
8PM • ARTS & CULTURE CENTRE

THE MUSIC OF
Chicago



JODY RICHARDSON
vocalist

TICKETS \$45 / \$40



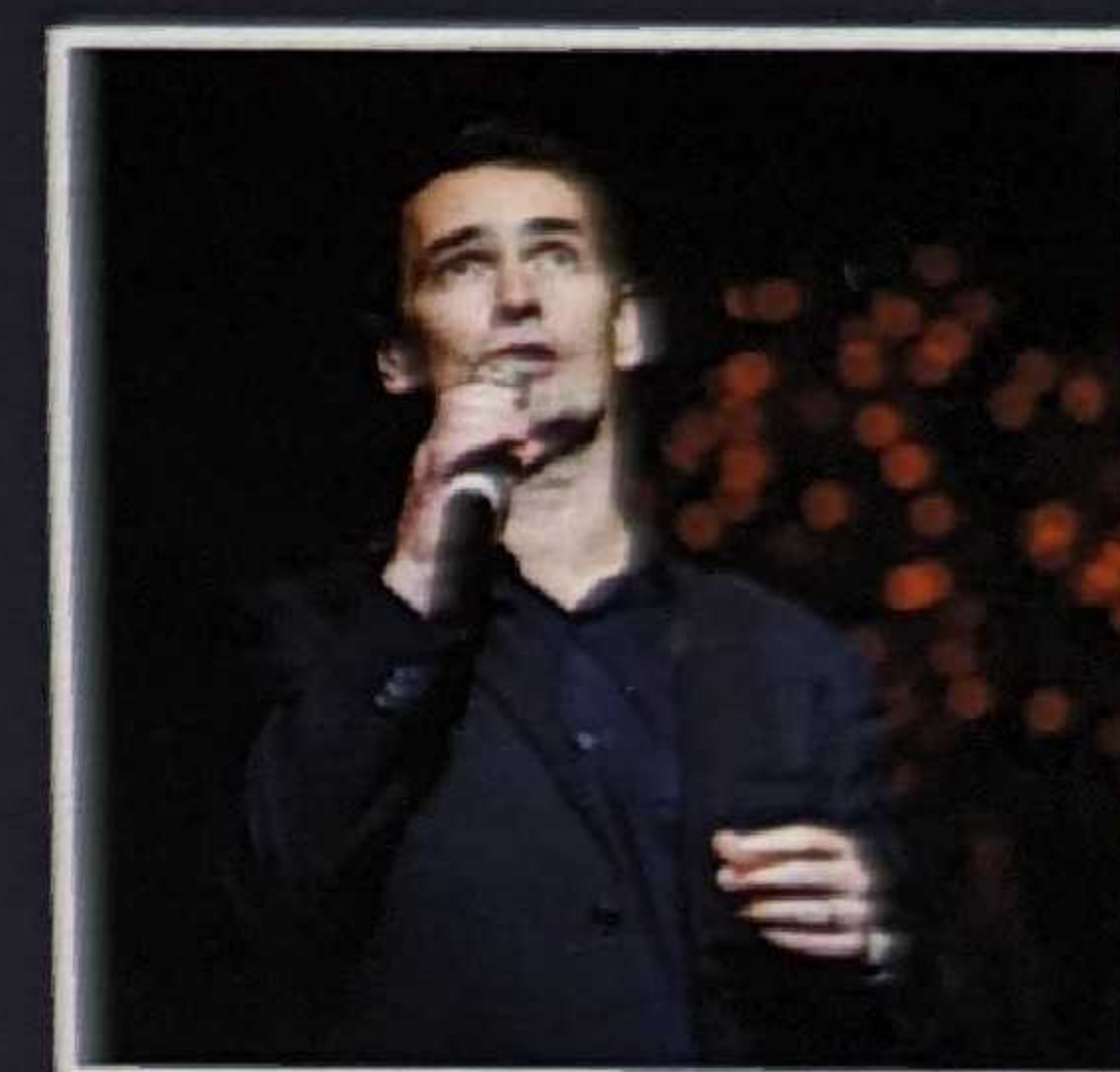
How Sweet the Sound

SATURDAY, APRIL 18, 2015
8PM • ARTS & CULTURE CENTRE

POP
S



GREG HAWCO
conductor



CORY TETFORD
vocalist

From gospel to rock, join us as Cory Tetford takes us on the musical journey of his career thus far.

Tickets \$45 / \$40



COX & PALMER PROUDLY PRESENTS

Händel's Messiah

FRIDAY, DECEMBER 12, 2014
& SATURDAY, DECEMBER 13, 2014
8PM • BASILICA OF ST. JOHN THE BAPTIST

MARC DAVID *conductor*

SHANNON MERCER *soprano*

JULIE NESRALLAH *mezzo-soprano*

MICHAEL COLVIN *tenor*

PHILIPPE SLY *baritone*

PHILHARMONIC CHOIR OF THE NSO



Tickets \$30 / \$25



Under 30? Do we have a deal for you!

TELUS FAMILY PLAN

The NSO offers a special \$10 ticket price to children 6-14 when accompanied by an adult. Whether you're a season subscriber or a single ticket purchaser, this unbeatable offer is for you!



GO-NSO!

Sign up for a free membership and enjoy premium concerts for \$10. To join, call the NSO office at 722 4441. This offer is available to students from 15-29.



SYMPHONY GOES TO SCHOOL

Designed to help foster lifelong love of orchestral music, Symphony Goes to School offers top notch music education materials to Grade 5 & 6 students. As an added bonus, each child has the opportunity to attend all Masterworks concerts at no charge when accompanied by an adult.



photo by Greg Locke

Series and Pricing

Save 20%	Adult/Senior	A Section	B Section
CONNOISSEUR PACKAGE <i>includes all 4 Masterworks, 3 Sinfonias, 4 Recitals, Messiah, Big Band and POPS</i>	Adult	\$381	\$349
	Senior	\$331	\$299
Save 10%			
MASTERWORKS SERIES <i>includes all 4 Masterworks concerts</i>	Adult	\$162	\$126
	Senior	\$144	\$108
SINFONIA SERIES <i>includes all 3 Sinfonia concerts</i>	Adult	\$86	N/A
	Senior	\$73	N/A
RECITAL SERIES <i>includes all 4 Recitals</i>	Adult	\$72	N/A
	Senior	\$61	N/A

all prices include 13% HST, ACC service fees and reflect applicable discounts

Subscription Order Form

Packages & Series	Section A/B	Price Adult/Senior	Number of Subscriptions	Total			
CONNOISSEUR PACKAGE <i>includes all 4 Masterworks, 3 Sinfonias, 4 Recitals, Messiah, Big Band and POPS</i>	Big Band FRI OR SAT	Messiah FRI OR SAT	A OR B	\$		\$	
MASTERWORKS SERIES <i>includes all 4 Masterworks concerts</i>			A OR B	\$		\$	
SINFONIA SERIES <i>includes all 3 Sinfonia concerts</i>			A	\$		\$	
RECITAL SERIES <i>includes all 4 Recitals</i>			A	\$		\$	
U-PICK SERIES <i>Choose a min. of 4/max. of 8 concerts from our Masterworks, Sinfonia and Recital Series</i>			Please select U-PICK on reverse			\$	
SUBTOTAL <i>of subscription series/packages</i>						\$	
Save 10% <i>(discount already applied to prices) on Messiah, Big Band and POPS when you purchase with your subscription.</i>	ADD MESSIAH <i>to Masterworks, Sinfonia, Recital or U-PICK (\$27/\$23)</i>		Messiah	FRI OR SAT		\$	
	ADD BIG BAND <i>to Masterworks, Sinfonia, Recital or U-PICK (\$41/\$36)</i>		Big Band	FRI OR SAT		\$	
	ADD POPS <i>to Masterworks, Sinfonia, Recital or U-PICK (\$41/\$36)</i>						\$
	ADD GALA <i>to any subscription package for \$100.00</i>						\$
I would like to support the NSO by making a charitable gift of: <i>(Charitable Registration # 12207 6227 RR0001)</i>						\$	
TOTAL <i>(all prices include 13% HST, ACC service fees and reflect applicable discounts)</i>						\$	

Subscription Order Form

U-Pick Series					Your Details		
Pick a min of 4 max of 8	Full Price A Adult/Senior	Full Price B Adult/Senior	Number of Subscriptions	Total	Name		
MW1	\$45/\$40	\$35/\$30		\$	Email		
MW2	\$45/\$40	\$35/\$30		\$	Address		
MW3	\$45/\$40	\$35/\$30		\$			
MW4	\$45/\$40	\$35/\$30		\$	City	Province	Post Code
SIN1	\$32/\$27			\$	Day Phone		Evening Phone
SIN2	\$32/\$27			\$	<input type="radio"/> I'm a new Subscriber		<input type="radio"/> I'm a returning Subscriber / Seat #
SIN3	\$32/\$27			\$	Method of Payment		
REC1	\$20/\$17			\$	<input type="radio"/> Visa <input type="radio"/> Mastercard		
REC2	\$20/\$17			\$	<input type="radio"/> Cheque enclosed (<i>payable to Newfoundland Symphony Orchestra</i>)		
REC3	\$20/\$17			\$	Credit Card Number		Exp. Date
REC4	\$20/\$17			\$	Signature		
Subtotal				\$	PRIVACY POLICY: We respect the privacy of our valued patrons and want to ensure that all personal information remains confidential and secure. The information you provide will not be shared with any other businesses or outside organizations.		
Less 10%				\$			
U-Pick Total (<i>include on other side of form</i>)				\$			

Choose Your Seats

Important Dates

August 29, 2014 - *Subscription Renewal Deadline*

September 2, 2014 - *Single Tickets Go On Sale*

Questions? Contact us:

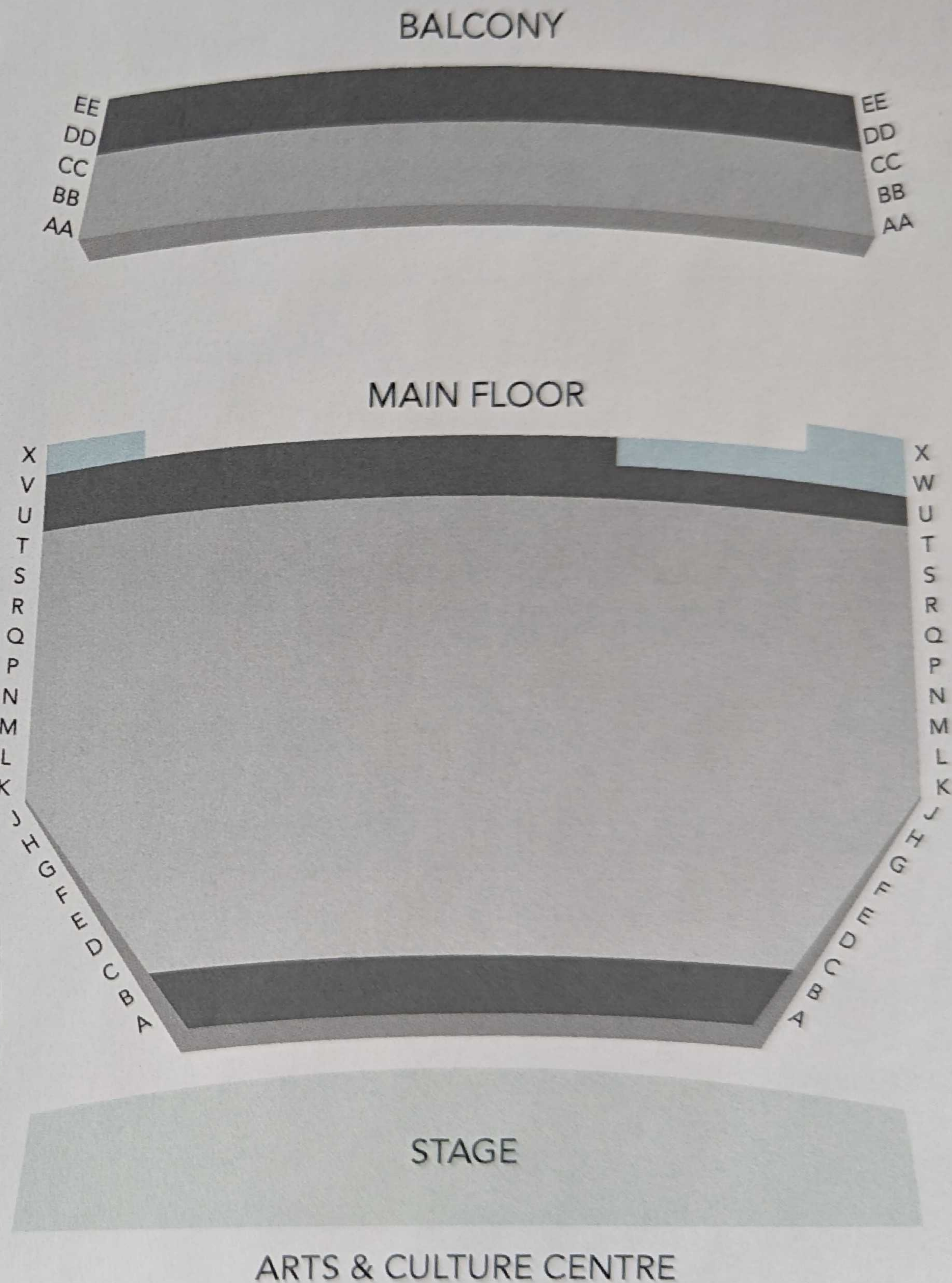
By phone
709.722.4441

Email
nso@nso-music.com

In person
3rd Floor, Arts & Culture Centre

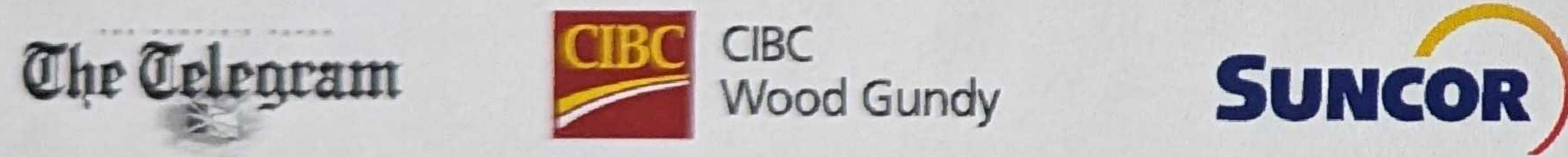
By mail
P.O. Box 1854, St. John's, NL A1C 5P9

Online
nso-music.com





ST. JOHN'S



2014/15 Marketing Partners



Contact Us



Newfoundland Symphony Orchestra

Arts & Culture Centre
3rd floor, PO Box 1854, St. John's, NL A1C 5P9
T: 709.722.4441 | F: 709.753.0561
info@nso-music.com | www.nso-music.com



For the latest news and special promotions,
follow us on facebook and Twitter