



NEWFOUNDLAND
SYMPHONY ORCHESTRA

2015/16 SEASON

To subscribe 709.722.4441

nsomusic.ca



CLASSICALLY.

hip

HOW TO ORDER

BY PHONE
709.722.4441

IN PERSON
3rd Floor, Arts & Culture Centre

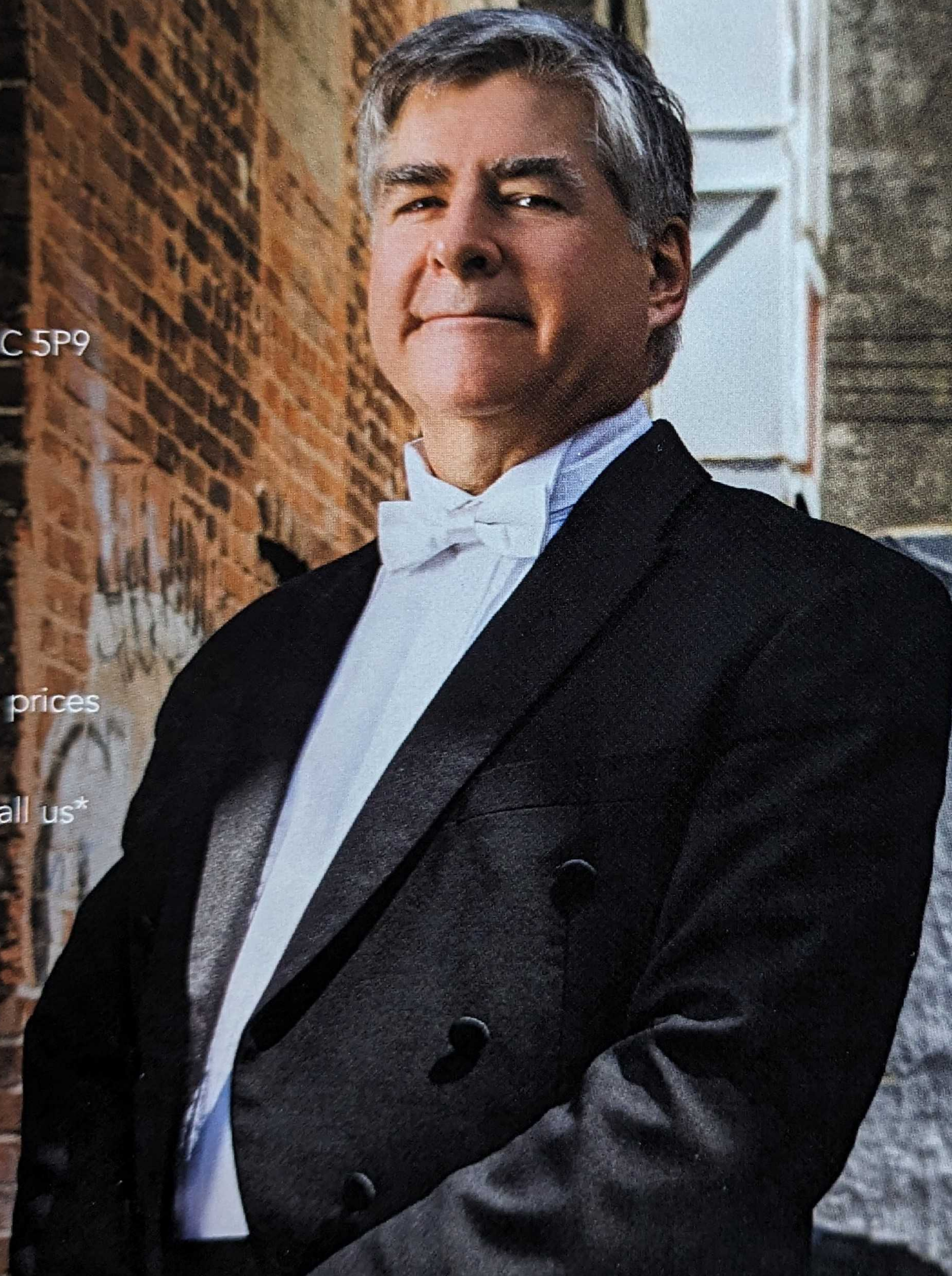
BY MAIL
P.O. Box 1854, St. John's, NL A1C 5P9

BENEFITS

FABULOUS SEATS
First choice of best seats

FANTASTIC SAVINGS
Save up to 20% off regular ticket prices

FREE TICKET EXCHANGES
Change of plans? No problem, call us*





SUBSCRIBER INFORMATION

Subscription sales close on
Friday, August 28, 2015

*Some conditions apply.

Dear Friends of the NSO,

It is my great pleasure to welcome you to our exciting 2015-16 Season!

Celebrating youth with our Masterworks Series, including guest appearances by Jan Lisiecki, Kerson Leong, Stéphane Tétreault, Shallaway and the Newfoundland Symphony Youth Orchestra, I am confident you will be captivated by the exceptional talent of these young artists.

Our Sinfonia and Recital Series will continue to be presented in a more intimate setting, featuring solo performances by our new concertmaster, principal trumpet Katie Sullivan, the MUN chamber choir and the recently restructured Atlantic String Quartet. Once again, we will offer a broad range of repertoire to suit a variety of musical tastes.

I extend to you a sincere invitation to join us for another exhilarating season, enjoying excellent performances of the music you love played by people you know.

As always, I look forward to seeing you again soon.



MARC DAVID *Music Director*

On the front cover: NSO violinist Jessica Pereversoff. Photo by Greg Locke.

MASTERWORKS SERIES

NEWFOUNDLAND SYMPHONY ORCHESTRA • MARC DAVID *conductor*
ARTS & CULTURE CENTRE • **TICKETS A: \$45 / \$40 • B: \$35 / \$30**

MW1 Jan-tastic!
Thursday, September 24, 2015 • 7PM



Special DAY and TIME!
Thursday at 7PM

JAN LISIECKI *piano*

WAGNER

*Prelude to Die Meistersinger
von Nürnberg*

SCHUMANN

*Introduction and Allegro
Appassionato, Op. 92*

SCHUMANN

Concert-Allegro, Op. 134

BEETHOVEN

Symphony No. 7, Op. 92, A Major

PRESENTED BY

The Telegram
THE PEOPLE'S PAPER


MW2 Hear Us
Friday, November 20, 2015 • 8PM



SHALLAWAY

KELLIE WALSH *artistic director*

PRESENTED BY

 **nalcor**
energy

EMERSON

Newfoundland Rhapsody

KUZMENKO

Behold the Night

VAUGHAN WILLIAMS

Folk Songs of the Four Seasons

CHILCOTT

Can You Hear Me?

DEBUSSY

*Marche écossaise sur un
thème populaire*

Nocturnes, L.91

MW3 Our New World

Friday, February 12, 2016 • 8PM



KERSON LEONG *violin*

**NEWFOUNDLAND SYMPHONY
YOUTH ORCHESTRA**

GRANT ETCHEGARY *conductor*

PRESENTED BY



BERTRAND

Rideau et Fanfares

BRUCH

*Violin Concerto No. 1,
Op. 26, G minor*

DVOŘÁK

*Symphony No. 9, Op. 95, E minor
'From the New World'*

MW4 Hello Cello

Friday, March 11, 2016 • 8PM



STÉPHANE TÉTREULT *cello*

ALLISON NICHOLAS *soprano*

ALANNA FRAIZE *mezzo-soprano*

AARON SHEPPARD *tenor*

HUGO LAPORTE *baritone*

**PHILHARMONIC CHOIR
OF THE NSO**

DOUGLAS DUNSMORE *conductor*

ROSS

Fanfare for a New Found Land

SCHUMANN

*Concerto for Cello,
Op. 129, A minor*

HAYDN

Lord Nelson Mass

ELITE SINFONIA SERIES

elite
audio visual & special events

NSO SINFONIA • MARC DAVID *conductor*

D.F. COOK RECITAL HALL, MEMORIAL UNIVERSITY • 8PM • **TICKETS \$32 / \$27**

S1 Welcome Home Saturday, October 17, 2015

At this concert we introduce and celebrate our new Concertmaster. Who will it be and what will be played?

STAY TUNED!

SOMMERS

*Little Suite for String Orchestra
on Canadian Folk Songs*

GRIEG

Holberg Suite, Op. 40

S2 K-K-K-Katie! Saturday, January 9, 2016



KATIE SULLIVAN *piccolo trumpet*

BACH

Brandenburg Concerto, No. 3, G Major, BWV 1048

NERUDA

Concerto for Trumpet in E \flat

HÄNDEL

Suite in D for Trumpet, HWV 341

MOZART

Symphony, No. 36, C Major, K.425, 'Linz'

S3 Gloria Saturday, April 2, 2016



MEMORIAL UNIVERSITY CHAMBER CHOIR

JAKUB MARTINEC *conductor*

BACH

Suite No. 1, C Major, BWV 1066

VIVALDI

Gloria, RV 589

RECITAL SERIES

Subscription sales close on Friday, August 28, 2015

ATLANTIC STRING QUARTET

D.F. COOK RECITAL HALL, MEMORIAL UNIVERSITY • 8PM • **TICKETS \$20 / \$17**



photo by Greg Locke

R1

Sunday, October 4, 2015

MOZART

String Quartet, F Major, K.168

SCHUBERT

*String Quartet, No. 10,
Op. 125, No. 1, E \flat Major*

ROSS

*Interlude for String Quartet -
La Muerta me está mirando*

HAYDN

*String Quartet No. 3,
Op. 76, C Major, Hob. III:77*

R3

Sunday, February 21, 2016

HAYDN

*String Quartet, No. 5,
Op. 3, F Major, Hob. III:17*

BLISS

String Quartet, A Major, F. 23

BARTÓK

String Quartet, No. 1, Op. 7, A minor

R2

Sunday, November 1, 2015

PURCELL

Chacony in G minor, Z.730

HATZIS

*String Quartet No. 1
(for string quartet and tape)*

ELGAR

String Quartet, Op. 83, E minor

R4

Sunday, April 10, 2016

HAYDN

*String Quartet No. 30,
Op. 20, F minor, Hob. III:35*

SHOSTAKOVICH

String Quartet No. 6, Op. 101, G Major

BEETHOVEN

String Quartet, No. 12, Op. 127, E \flat Major

 **Hibernia**
presents the

**NSO HIBERNIA GALA
A 25TH ANNIVERSARY CELEBRATION**

**FRIDAY, OCTOBER 30 • 8PM
ARTS & CULTURE CENTRE**



photo by Greg Locke

**NEWFOUNDLAND
SYMPHONY ORCHESTRA**

MARC DAVID *conductor*

MARK CRITCH *host*

**Tickets \$100 with tax receipt for charitable portion
AVAILABLE ONLY AT THE NSO OFFICE • 722-4441**

PLATINUM SPONSOR



HOLIDAY POPS

CLOCKWORK FOX  presents

Sing in the Season!

**FRIDAY, NOVEMBER 27 • 8PM
COCHRANE STREET UNITED CHURCH**



**NEWFOUNDLAND
SYMPHONY ORCHESTRA**

MARC DAVID *conductor*

RENÉE MARQUIS *vocalist*



TICKETS \$30 / \$25



THE SUNCOR BIG BAND SHOW

FRIDAY, JANUARY 29 & SATURDAY, JANUARY 30 • 8PM
ARTS & CULTURE CENTRE



NEWFOUNDLAND SYMPHONY ORCHESTRA
MARC DAVID *conductor*

with ECMA nominated vocalist
ELEANOR MCCAIN

and a special tribute to
EARTHWIND & FIRE
featuring MARK MURPHY

TICKETS \$49 / \$45



We'll Meet Again A Wartime Tribute

FRIDAY, APRIL 22 • 8PM
ARTS & CULTURE CENTRE

NEWFOUNDLAND SYMPHONY ORCHESTRA
MARC DAVID *conductor*



SHELLEY NEVILLE *vocalist*

TICKETS \$49 / \$45

COX & PALMER *proudly presents*

Händel's Messiah

Friday, December 11, 2015

Saturday, December 12, 2015

8PM • Basilica of St. John the Baptist

NSO Sinfonia

Marc David *conductor*

Philharmonic Choir of the NSO

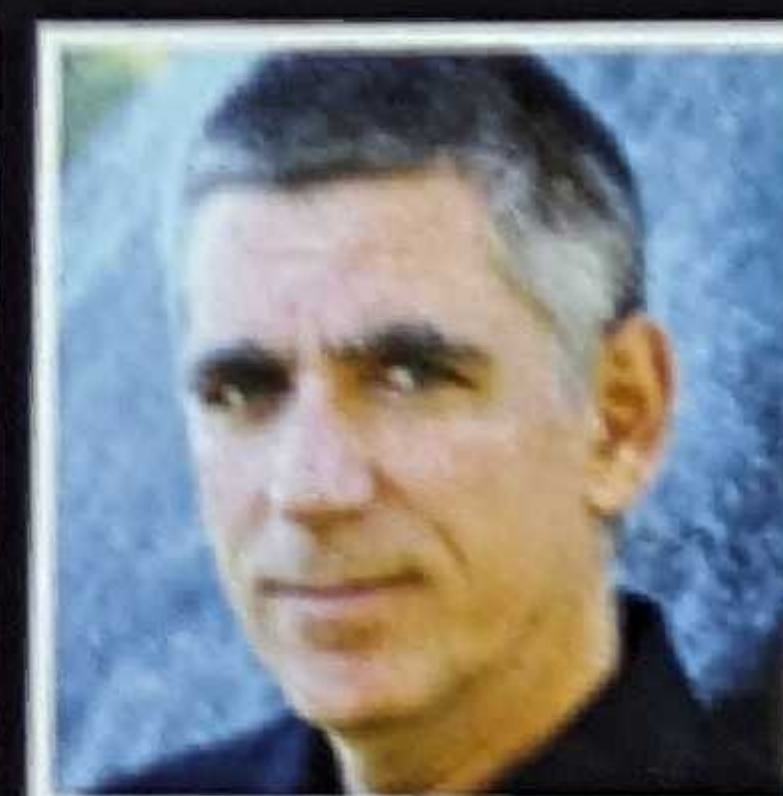
Douglas Dunsmore *conductor*

Martha Guth *soprano*

Daniel Cabena *countertenor*

Benjamin Butterfield *tenor*

Nathaniel Watson *baritone*



Tickets \$30 / \$25



UNDER 30? Do we have a deal for you!

TELUS FAMILY PLAN

The NSO offers a special \$10 ticket price to children 6-14 when accompanied by an adult. Whether you're a season subscriber or a single ticket purchaser, this unbeatable offer is for you!



TD GO NSO!

Sign up for a free membership and enjoy premium concerts for \$10. To join, call the NSO office at 722 4441. This offer is available to students from 15-29.



CHEVRON SYMPHONY GOES TO SCHOOL

Designed to help foster lifelong love of orchestral music, Symphony Goes to School offers top notch music education materials to Grade 5 & 6 students. As an added bonus, each child has the opportunity to attend all Masterworks concerts at no charge when accompanied by an adult.



SERIES AND PRICING

SAVE 20%	Adult/Senior	A Section	B Section
CONNOISSEUR PACKAGE <i>includes 4 Masterworks, 3 Sinfonias, 4 Recitals, Holiday Pops, Messiah, Big Band, and Pops</i>	Adult	\$411	\$379
	Senior	\$359	\$327
SAVE 10%			
MASTERWORKS SERIES <i>includes all 4 Masterworks concerts</i>	Adult	\$162	\$126
	Senior	\$144	\$108
SINFONIA SERIES <i>includes all 3 Sinfonia concerts</i>	Adult	\$86	N/A
	Senior	\$73	N/A
RECITAL SERIES <i>includes all 4 Recitals</i>	Adult	\$72	N/A
	Senior	\$61	N/A

all prices include 13% HST and ACC service fees

SUBSCRIPTION ORDER FORM

PACKAGES & SERIES			Section A/B	Price Adult/Senior	Number of Subscriptions	Total	
CONNOISSEUR PACKAGE includes 4 Masterworks, 3 Sinfonias, 4 Recitals, Holiday Pops, Messiah, Big Band, and Pops			Big Band FRI OR SAT	Messiah FRI OR SAT	A OR B	\$	\$
MASTERWORKS SERIES includes all 4 Masterworks concerts					A OR B	\$	\$
SINFONIA SERIES includes all 3 Sinfonia concerts					A	\$	\$
RECITAL SERIES includes all 4 Recitals					A	\$	\$
U-PICK SERIES Choose a min. of 4/max. of 8 concerts from Masterworks, Sinfonia and Recital Series			Please select U-PICK on reverse			\$	\$
SUBTOTAL of subscription series/packages						\$	\$
SAVE 10% on Messiah, Holiday Pops, Big Band, and Pops when you purchase with your subscription!	ADD MESSIAH to Masterworks, Sinfonia, Recital or U-PICK (\$27/\$23)			Messiah FRI OR SAT		\$	\$
	ADD HOLIDAY POPS to Masterworks, Sinfonia, Recital or U-PICK (\$27/\$23)					\$	\$
	ADD BIG BAND to Masterworks, Sinfonia, Recital or U-PICK (\$41/\$36)			Big Band FRI OR SAT		\$	\$
	ADD POPS to Masterworks, Sinfonia, Recital or U-PICK (\$41/\$36)					\$	\$
	ADD GALA to any subscription package for \$100.00					\$	\$
	I would like to support the NSO by making a charitable gift of: (Charitable Registration # 12207 6227 RR0001)					\$	\$
TOTAL (all prices include 13% HST and ACC service fees)					\$	\$	

SUBSCRIPTION ORDER FORM

U-PICK SERIES					YOUR DETAILS		
Pick a min of 4 max of 8	Full Price A Adult/Senior	Full Price B Adult/Senior	Number of Subscriptions	Total	Name		
MW1	\$45/\$40	\$35/\$30		\$	Email		
MW2	\$45/\$40	\$35/\$30		\$	Address		
MW3	\$45/\$40	\$35/\$30		\$			
MW4	\$45/\$40	\$35/\$30		\$	City	Province	Post Code
S1	\$32/\$27			\$	Day Phone		Evening Phone
S2	\$32/\$27			\$	<input type="radio"/> I'm a new Subscriber <input type="radio"/> I'm a returning Subscriber / Seat #		
S3	\$32/\$27			\$	METHOD OF PAYMENT		
R1	\$20/\$17			\$	<input type="radio"/> Visa <input type="radio"/> Mastercard		
R2	\$20/\$17			\$	<input type="radio"/> Cheque enclosed (payable to Newfoundland Symphony Orchestra)		
R3	\$20/\$17			\$	Credit Card Number		Exp. Date
R4	\$20/\$17			\$	Signature		
Subtotal				\$	PRIVACY POLICY: We respect the privacy of our valued patrons and want to ensure that all personal information remains confidential and secure. The information you provide will not be shared with any other businesses or outside organizations.		
Less 10%				\$			
U-Pick Total (include on other side of form)				\$			

CHOOSE YOUR SEATS

IMPORTANT DATES

August 28, 2015 - Subscription Renewal Deadline

August 31, 2015 - Single Tickets Go On Sale

QUESTIONS? CONTACT US:

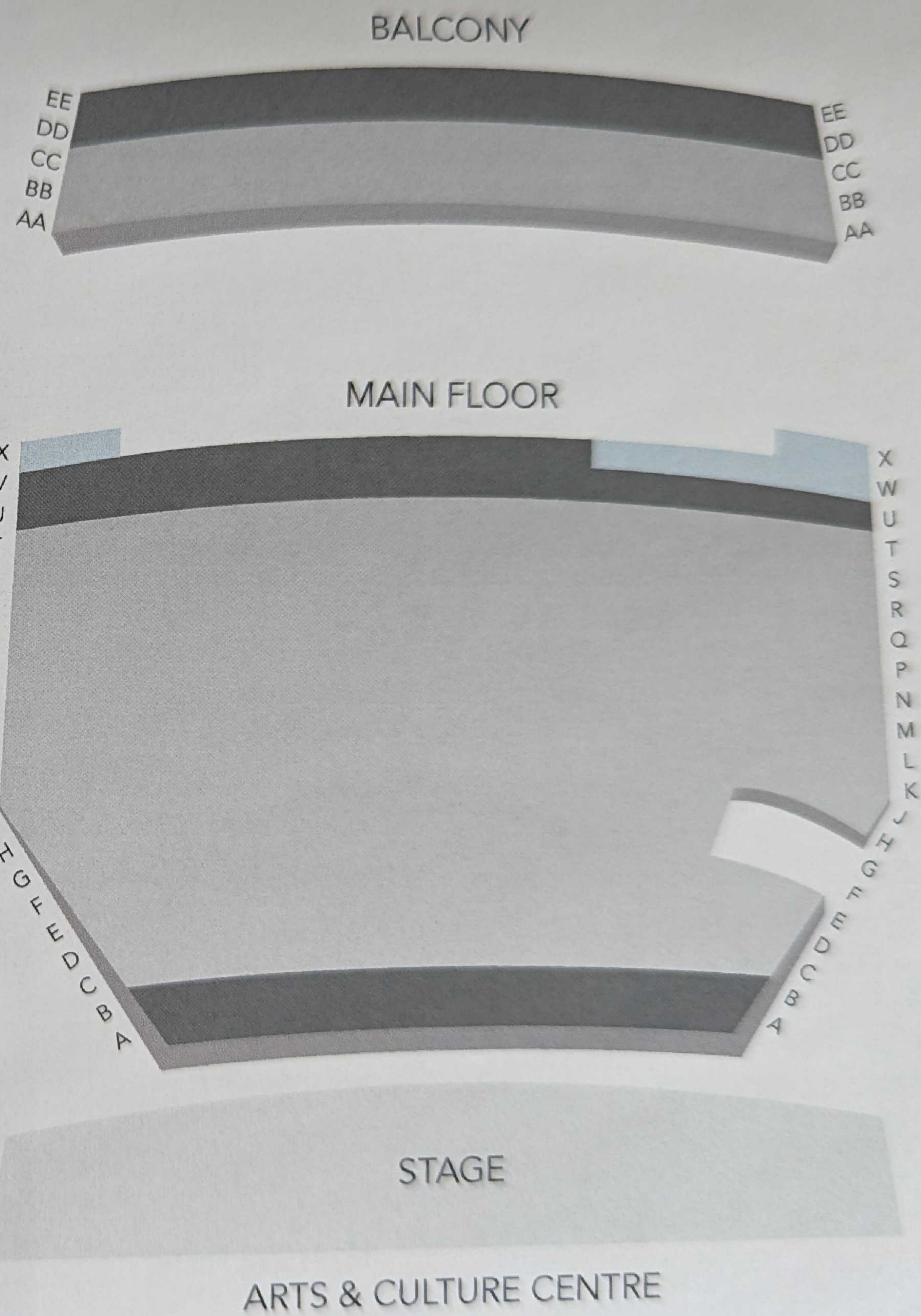
By phone
709.722.4441

Email
nso@nsomusic.ca

In person
3rd Floor, North Wing, Arts & Culture Centre

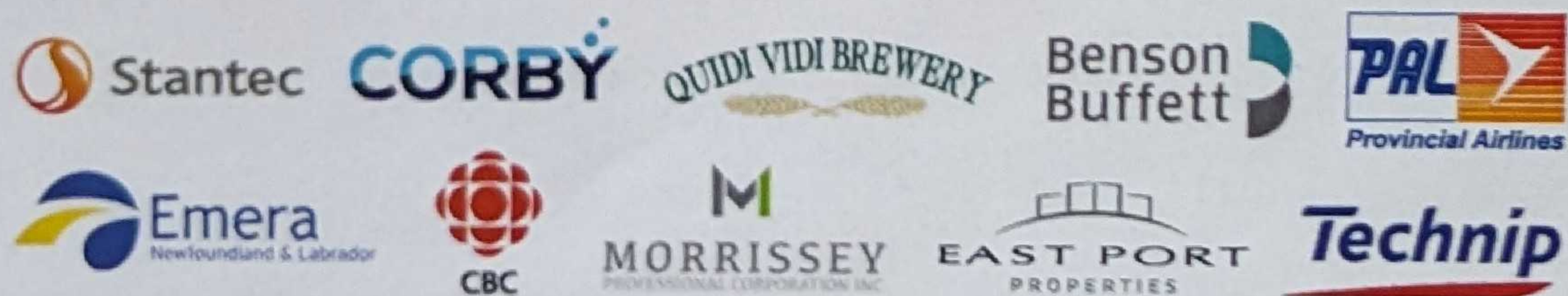
By mail
P.O. Box 1854, St. John's, NL A1C 5P9

Online
nsomusic.ca





ST. JOHN'S



2015/16 Marketing Partners



CONTACT US

Newfoundland Symphony Orchestra

Arts & Culture Centre

3rd floor, PO Box 1854, St. John's, NL A1C 5P9

T: 709.722.4441

nso@nsomusic.ca | nsomusic.ca

Follow us on Facebook and Twitter

@NSOonline Newfoundland Symphony Orchestra

